

Table of Contents

ElaborView User's Guide	2
01 Part I : Getting started	2
01. What is ElaborView	3
02. Installing ElaborView server	5
03. Installing ElaborView	9
02 Part II : Creating ElaborView project	17
01. ElaborView manager	18
03 Part III : The Reviewer	28
01. Activation and account management	29
02. Importing ElaborView projects or updates	32
03. Commenting	36
04 Part IV: Reviewing comments	48
01. Reviewing comments	49

What is ElaborView

ElaborView is a standalone product that lets you easily add notes and comments to designs created in Visual Paradigm modeling tools.

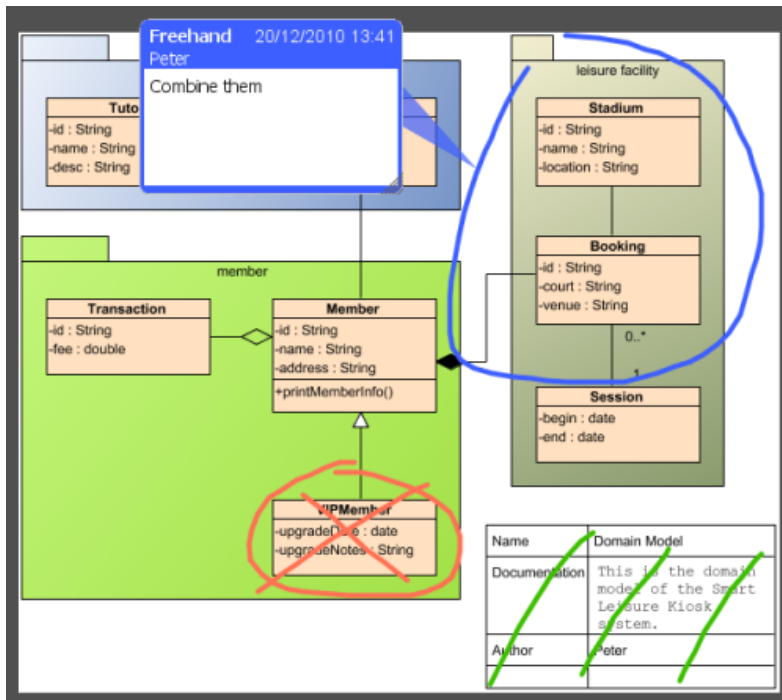
Introduction to ElaborView

Learn what ElaborView is and how it works.

Introduction to ElaborView

Visual Paradigm has been in the forefront of visual modeling technologies for many years. We have specialized in developing visual modeling tools that aid in software modeling, business process modeling, database modeling, requirement modeling, etc. With excellent quality and good prices, our products have been widely adopted by many enterprise customers. Having spent considerable time with customers and industry experts to learn from their experiences and understand their needs, we decided to develop a product that extends our visual modeling tools to provide review and comment functionality for designs created in our modeling tools. The result of effort is Visual Paradigm ElaborView.

ElaborView is a standalone product that lets you easily add notes and comments to designs created in Visual Paradigm modeling tools. Project owner can invite any number of reviewers to read a design and add their comments. Project owner then refine the designs base on feedback submitted by reviewers. With ElaborView, development team can manage design review cycles with discipline through easy-to-use commenting tools. ElaborView makes it simple to completely and accurately comment on designs and summarize comments from the reviewers, allowing project owner to view the feedback alongside the design in Visual Paradigm modeling tools.



Design with reviewer's comment

The following major features are included by ElaborView:

- **Review management:** Summarize and list reviewers' submissions (i.e. comments) project by project.
- **Review support:** Comment on designs with wide range of commenting tools such as Callout, Line, Oval, Rectangle, Arrow and Pencil.
- **Act upon feedback:** Project owner can open reviewers' submissions directly inside a diagram, and take appropriate actions like to correct a dedicated portion of design, to ignore it, or to talk to the reviewer upon the feedback.
- **Security:** Captcha can be enabled for account/reviewer creation for security concern.
- **Touch-screen support:** ElaborView is fully compatible with touch-screen monitors. You can comment on a design quickly through touch-screen interface.
- **Email notification:** Activities like project assignment, review submission and completion of project are well monitored. Email will be sent accordingly to make sure both the project owner and reviewers are being informed whenever the other side has taken any action.
- **Windows, Linux and Mac support:** ElaborView is now available for all Java enabled platforms which include Windows, Linux and Mac OS X.
- **Communicate through server/local:** There are two ways how project owner can communicate with reviewers - through ElaborView server or through passing zip files manually.

Installing ElaborView server

Install ElaborView Server on server machine.

Installing ElaborView Server on Windows 2000/NT/2003/XP/Vista/7

See how to install ElaborView Server on Windows.

Installing ElaborView Server on Mac OS X

See how to install ElaborView Server on Mac OS X.

Installing ElaborView Server on Linux and Unix

See how to install ElaborView Server on Linux/Unix.

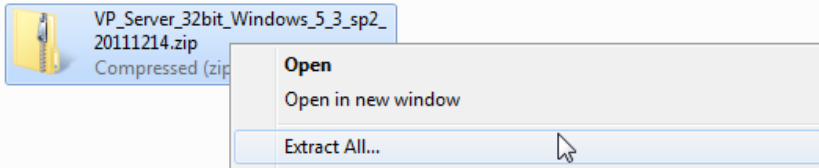
Server cleanup

See how to release disk space using clean up.

Installing ElaborView Server

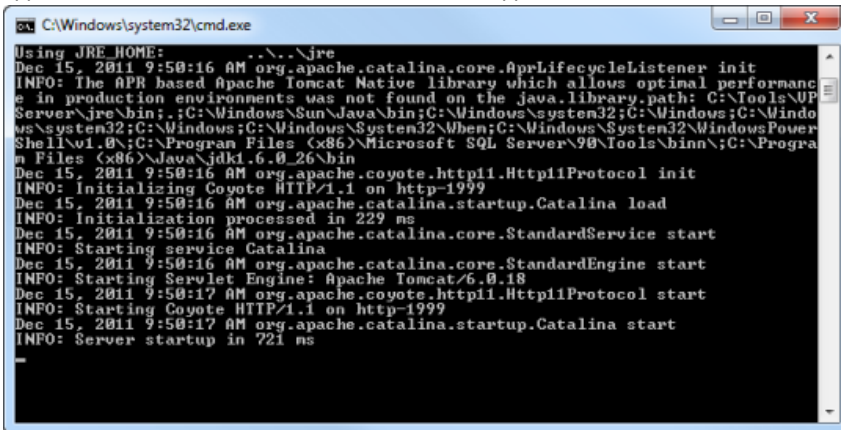
ElaborView Server is mainly responsible for storing ElaborView projects and recording their status. If you have purchased any Visual Paradigm modeling tools, you can download ElaborView Server from your customer account. If you are going to evaluate ElaborView Server, you can download the product from our official website. Get it ready, and read through this page to install the ElaborView Server. Before you start, make sure you have a machine ready for the installation of ElaborView Server. The minimum requirement of such machine is that it must be accessible by client machines through network, either Intranet or Internet.

1. Having downloaded the zipped Visual Paradigm Server to the server machine, extract it to the folder where you want the ElaborView Server to install to. When finish, you obtain a folder **VPServer**.



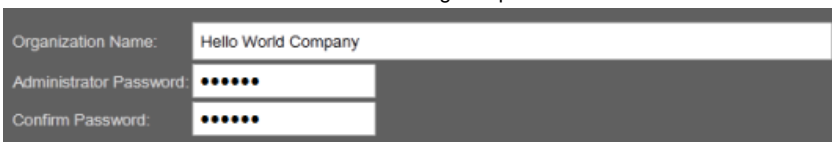
Extracting the zipped VP Server

2. Start up the server by running **VPServer\scripts\startup.bat** file (startup.sh for Linux and Mac OS X). You may see a command console appear. Do NOT close it or else the server will be stopped.



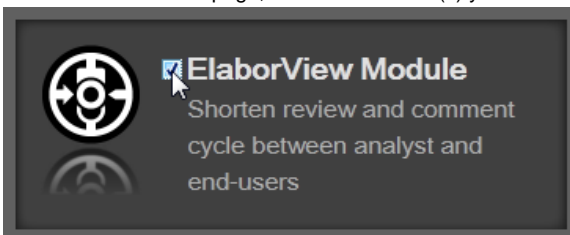
Command console

3. Open your web browser and visit: **http://127.0.0.1:1999/**.
4. The server installation page appears. Enter your organization's name and a new administrator password. Enter the same password again for confirmation. Click **Select Module** at bottom right to proceed.



Organization name and password are entered

5. In the **Select Module** page, select the module(s) you need to activate. Select **ElaborView Module**.



Select ElaborView Module

NOTE: You can select more than one modules. In this user's guide only the ElaborView Module will be covered. If you want to know the details about the other supported modules, please check from their user's guides.

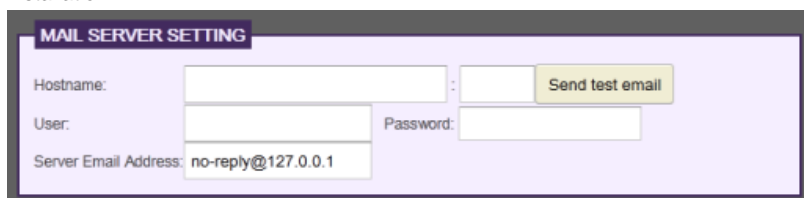
6. Click **Configure Database/Module** at bottom right. The **Configure Database** page appears.

7. There is data that VP Server need to make persistent, such as your login name, password, server repository path, etc. All these have to be stored in a database. Initially the **Embedded** database would be selected for you. The **Embedded** database is a ready-to-use database management system built into the server. In other words, no additional database setup has to be made by choosing **Embedded** database. If you want to store data in an external database, click **Change** and fill in the connection information of the database. You need to prepare an empty database if you take the option of external database.



Going to select a database

8. Click **Configure Module** at bottom right. The **Mail Server Setting** page appears. Email will be sent to project owner and reviewers when they perform activities like creating project and submitting feedback. You are required to supply valid mail server setting in order to let ElaborView server deliver Emails properly. Note that ElaborView is unable to check whether the supplied setting is valid or not. Having entered the setting, click on **Send test email** to see if you can receive the test mail send by the server. Note that the mail content is so simple to be treated as spam by your mail program. If you do not see the email for a while, please check the junk box. Fill in the settings and click **Finish** to complete the installation.



Setup mail Server

Server cleanup

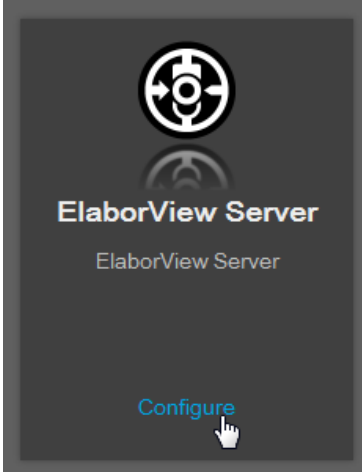
ElaborView Server supports purging. Administrator has the right to clean up server to free up disk space. This deletes completed project from server permanently. Note that only projects with Completed stated will be deleted.

1. In the server machine, open your web browser and visit: **http://127.0.0.1:1999/admin/login.jsp**.
2. Enter the administrator password and click **Login**.



Login to ElaborView Server

3. Click on **Configure** for ElaborView Server.



Configure ElaborView Server

4. Click **Cleanup**.



Click Cleanup

Installing ElaborView

Install ElaborView (client) on client machine.

Installing ElaborView on Windows 2000/NT/2003/XP/Vista

Learn how to install ElaborView client on Windows.

Installing ElaborView on Mac OS X

Learn how to install ElaborView client on Mac OS X.

Installing ElaborView on Linux and Unix

Learn how to install ElaborView client on Linux/Unix.

Starting ElaborView

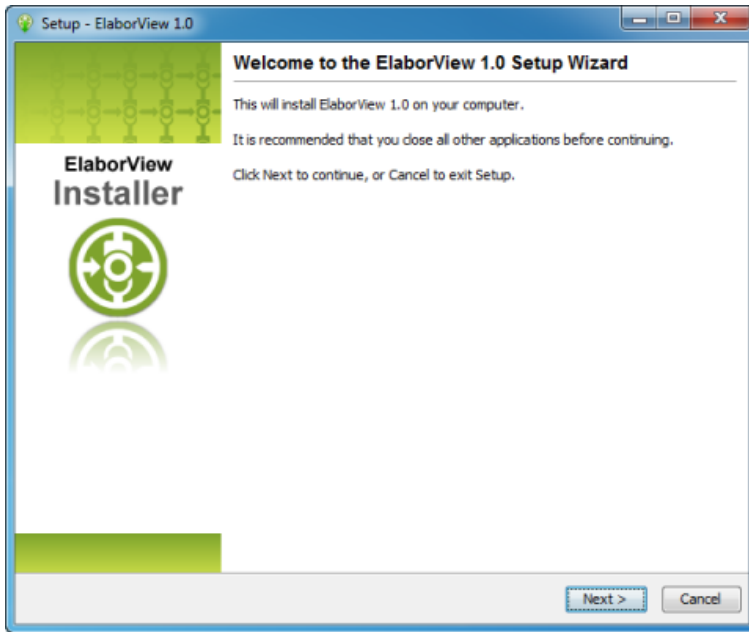
Learn how to start ElaborView.

Installing ElaborView on Windows 2000/NT/2003/XP/Vista

Having downloaded the installer of ElaborView, you can execute it to install ElaborView. If you are using the no-install zip version, you just need to unzip it, and run the startup script inside to execute ElaborView. In this chapter, we will go through the installation of ElaborView both with installer (.exe) and no-install (.zip).

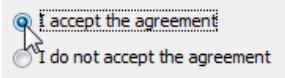
Using installer (.exe)

1. Execute the downloaded ElaborView installer file. The setup wizard appears as below.



ElaborView Welcome screen

2. Click **Next** to proceed to the **License Agreement** page.
3. Read through the license agreement carefully. Make sure you accept the terms before continuing with the installation. If you accept the agreement, select **I accept the agreement** and click **Next >** to proceed to the **Select Destination Directory** page.

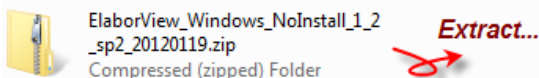


Accept License Agreement

4. Specify the directory for installing ElaborView. Click **Next >** to proceed to the next page.
5. Specify the name of the Start Menu folder that will be used to store the shortcuts. Keep **Create shortcuts for all users** checked if you want the shortcut to be available in all the user accounts in the machine. Click **Next >** to proceed with file copying.
6. When finish, you can select whether to start ElaborView or not. Keep **ElaborView** selected and click **Finish** will run **ElaborView** right away. If you do not run it now, you can start it manually under the **bin** folder in the installation directory.

Using no install version (.zip)

1. Extract the downloaded zip file into a directory. This should create a subdirectory named "ElaborView 1.0" where 1.0 is the version number.



Extracting No-Install zip file

2. To start ElaborView, run it inside the **bin** folder in the installation directory.

Installation FAQ

Question: What is the difference between Installer and "No Install Version"?

Answer: Installer version creates shortcut and registers the menus that make the system more easy to use. We suggest user to use installer version for a long term usage. The No Install version is good for evaluation and testing the release candidate.

Question: What is the difference ElaborView Server and ElaborView?

Answer: They are two different products. ElaborView Server is a place to store ElaborView projects. ElaborView is a tool to comment on designs inside an ElaborView project. They work in a way that project owners send their design to ElaborView Server, reviewers then run ElaborView, import projects from server and start commenting.

Question: I cannot complete the installation due to a file is missing when copying files. What can I do?

Answer: This can be caused by a corrupted installer file. Please download the installer file again with a different mirror site and run it again to solve the problem.

Question: I cannot start the application after installing the software. What can I do?

Answer: There are several possible causes of the problem. If you are sure that your installation was performed correctly, contact Visual Paradigm's support team (support-team@visual-paradigm.com) for assistance. It is recommended to include the vp.log file, which can be found at the bin folder of ElaborView installation directory, for our team to diagnose in further.

Question: I don't have administrator right, can I install the software?

Answer: Yes, you can.

Question: The installer file is detected to contain a virus. What can I do?

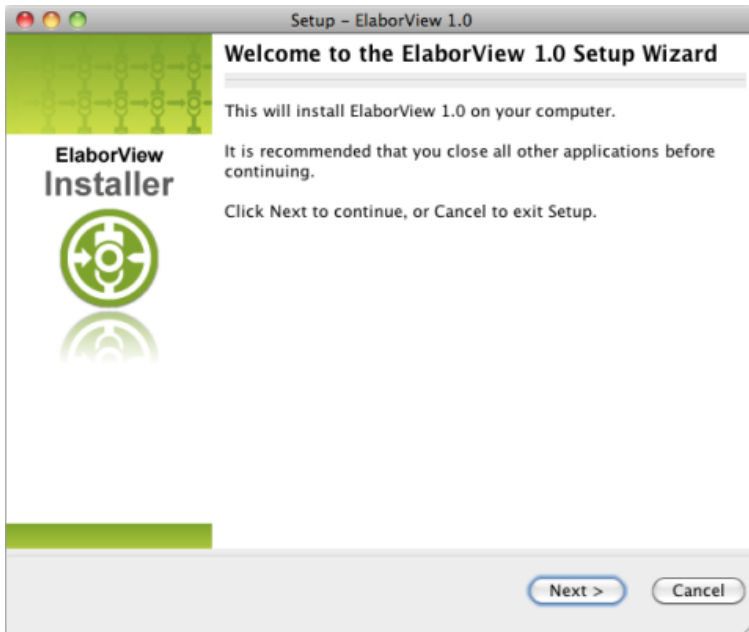
Answer: Our installer files are all packed by ourselves in a secure environment, and are scanned for virus before releasing to public. If a virus is detected, please update to the latest virus profile first. After that, we recommend you perform a full system scan, download the installer file from our official site, and run the installation again. If the problem remains, please contact us (support-team@visual-paradigm.com) or the virus scanner vendor for assistance.

Installing ElaborView on Mac OS X

Having downloaded the installer of ElaborView, you can execute it to install ElaborView. If you are using the no-install zip version, you just need to unzip it, and run the startup script inside to execute ElaborView. In this chapter, we will go through the installation of ElaborView both with installer (.dmg) and no-install (.tgz).

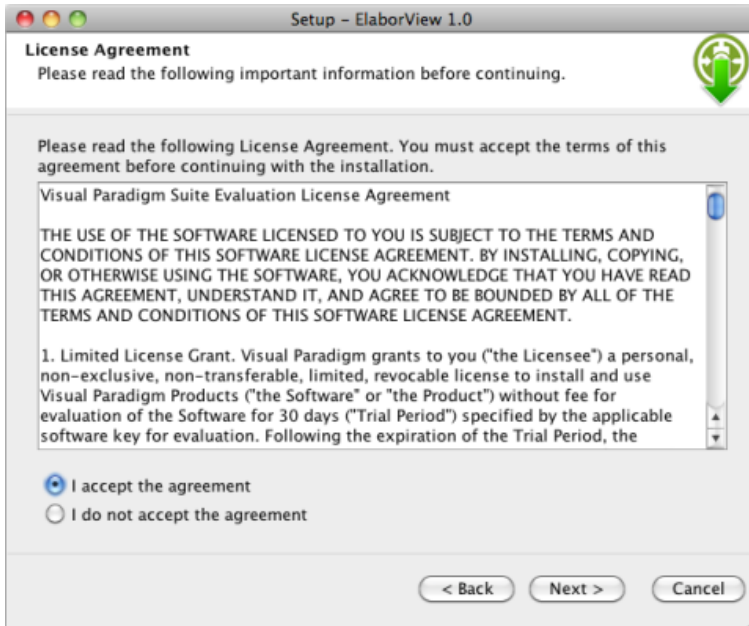
Using installer (.dmg)

1. Execute the downloaded ElaborView installer file. The setup wizard appears as below.



ElaborView Welcome screen

2. Click **Next** to proceed to the **License Agreement** page.
3. Read through the license agreement carefully. Make sure you accept the terms before continuing with the installation. If you accept the agreement, select **I accept the agreement** and click **Next >** to proceed to the **Select Destination Directory** page.

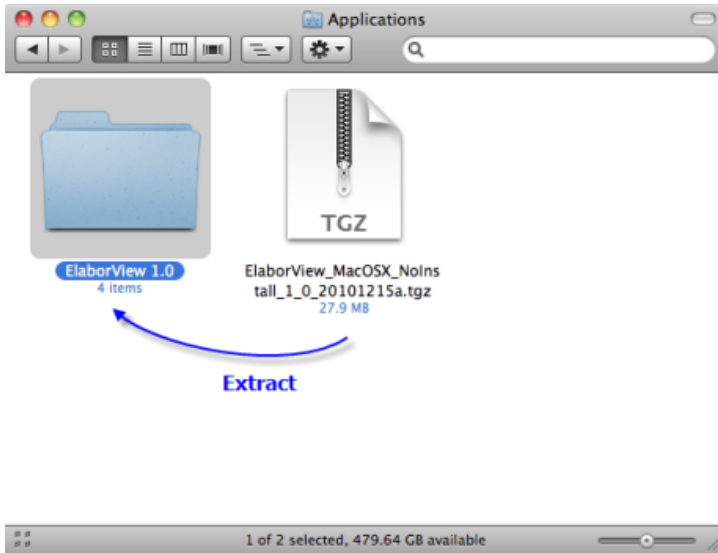


The License Agreement

4. Specify the directory for installing ElaborView. Click **Next >** to proceed to the next page.
5. Specify the name of the Start Menu folder that will be used to store the shortcuts. Keep **Create shortcuts for all users** checked if you want the shortcut to be available in all the user accounts in the machine. Click **Next >** to proceed with file copying.
6. When finish, you can select whether to start ElaborView or not. Keep **ElaborView** selected and click **Finish** will run **ElaborView** right away. If you do not run it now, you can start it manually under the **bin** folder in the installation directory.

Using no install version (.tgz)

1. Extract the downloaded zip file into a directory. This should create a subdirectory named "ElaborView 1.0" where 1.0 is the version number.



Extracting No-Install zip file

2. To start ElaborView, run it inside the **bin** folder in the installation directory.

Installation FAQ

Question: What is the difference between Installer and "No Install Version"?

Answer: Installer version creates shortcut and registers the menus that make the system more easy to use. We suggest user to use installer version for a long term usage. The No Install version is good for evaluation and testing the release candidate.

Question: What is the difference ElaborView Server and ElaborView?

Answer: They are two different products. ElaborView Server is a place to store ElaborView projects. ElaborView is a tool to comment on designs inside an ElaborView project. They work in a way that project owners send their design to ElaborView Server, reviewers then run ElaborView, import projects from server and start commenting.

Question: I cannot complete the installation due to a file is missing when copying files. What can I do?

Answer: This can be caused by a corrupted installer file. Please download the installer file again with a different mirror site and run it again to solve the problem.

Question: I cannot start the application after installing the software. What can I do?

Answer: There are several possible causes of the problem. If you are sure that your installation was performed correctly, contact Visual Paradigm's support team (support-team@visual-paradigm.com) for assistance. It is recommended to include the vp.log file, which can be found at the bin folder of ElaborView installation directory, for our team to diagnose in further.

Question: I don't have administrator right, can I install the software?

Answer: Yes, you can.

Question: The installer file is detected to contain a virus. What can I do?

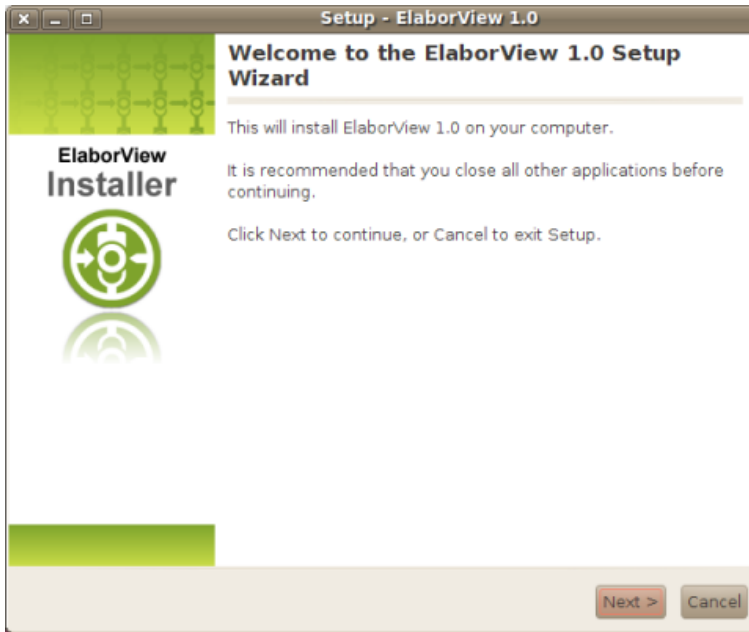
Answer: Our installer files are all packed by ourselves in a secure environment, and are scanned for virus before releasing to public. If a virus is detected, please update to the latest virus profile first. After that, we recommend you perform a full system scan, download the installer file from our official site, and run the installation again. If the problem remains, please contact us (support-team@visual-paradigm.com) or the virus scanner vendor for assistance.

Installing ElaborView on Linux and Unix

Having downloaded the installer of ElaborView, you can execute it to install ElaborView. If you are using the no-install zip version, you just need to unzip it, and run the startup script inside to execute ElaborView. In this chapter, we will go through the installation of ElaborView both with installer (.sh) and no-install (zip).

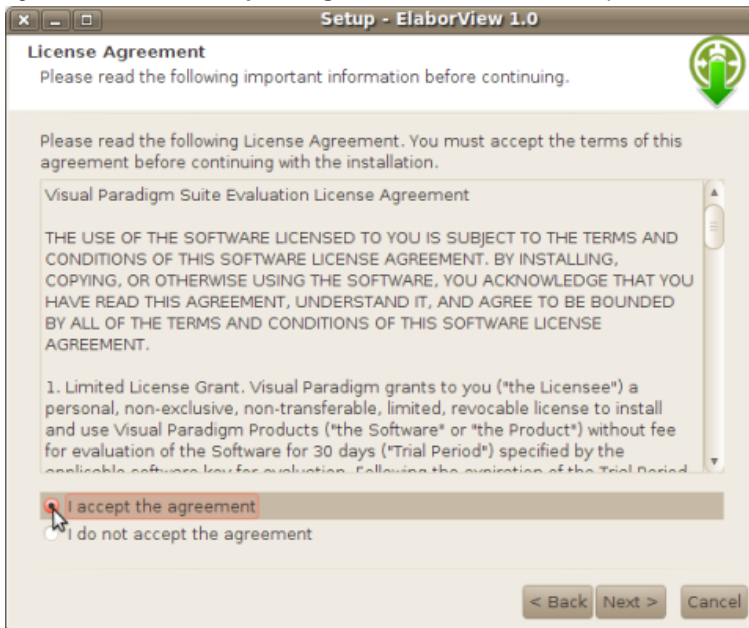
Using installer (.sh)

1. Execute the downloaded ElaborView installer file. The setup wizard appears as below.



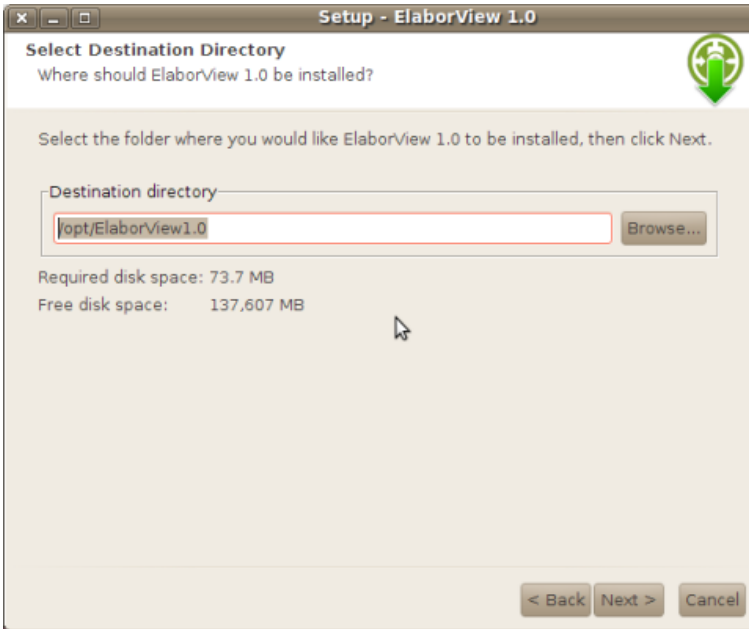
ElaborView Welcome screen

2. Click **Next** to proceed to the **License Agreement** page.
3. Read through the license agreement carefully. Make sure you accept the terms before continuing with the installation. If you accept the agreement, select **I accept the agreement** and click **Next >** to proceed to the **Select Destination Directory** page.



The License Agreement

- Specify the directory for installing ElaborView. Click **Next >** to proceed to the next page.

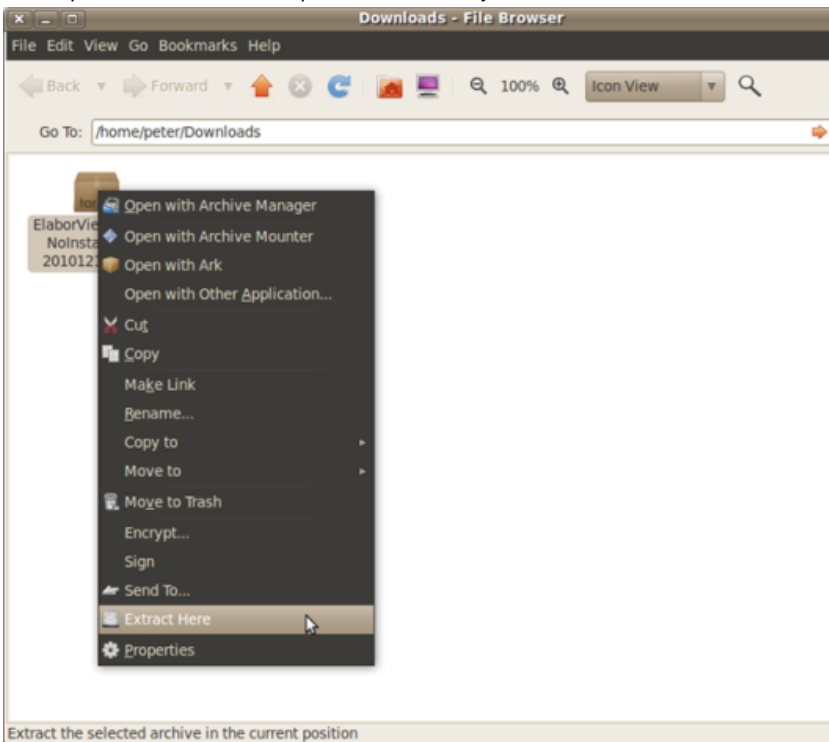


Specify the directory

- Specify the name of the Start Menu folder that will be used to store the shortcuts. Keep **Create shortcuts for all users** checked if you want the shortcut to be available in all the user accounts in the machine. Click **Next >** to proceed with file copying.
- When finish, you can select whether to start ElaborView or not. Keep **ElaborView** selected and click **Finish** will run **ElaborView** right away. If you do not run it now, you can start it manually under the **bin** folder in the installation directory.

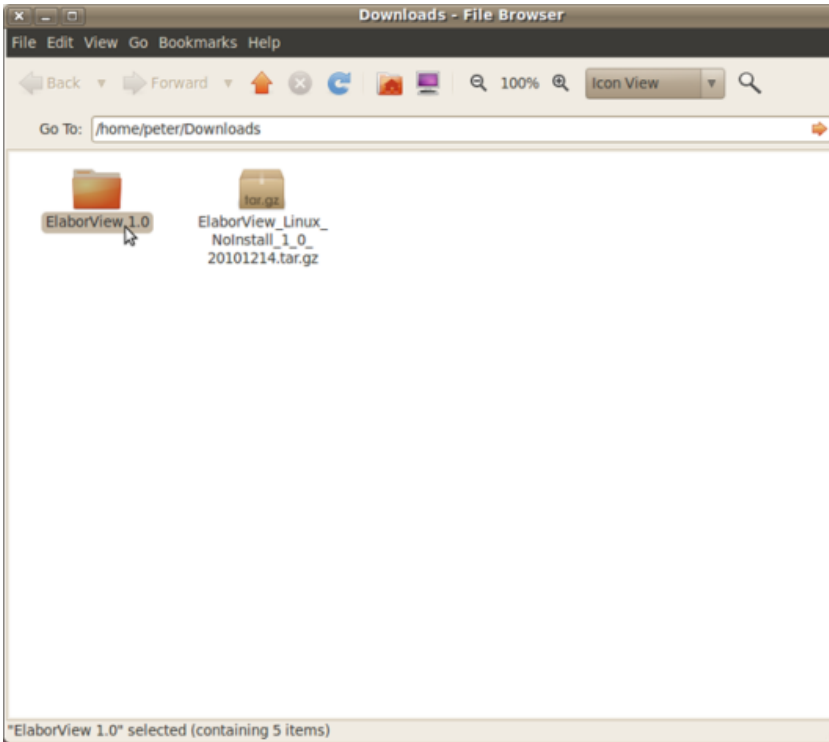
Using no install version (.tar.gz)

- Decompress the downloaded zip file into a directory.



Extracting No-Install zip file

2. This should create a subdirectory named "ElaborView 1.0" where 1.0 is the version number. To start ElaborView, run it inside the **bin** folder in the installation directory.



Subdirectory is shown

Installation FAQ

Question: What is the difference between Installer and "No Install Version"?

Answer: Installer version creates shortcut and registers the menus that make the system more easy to use. We suggest user to use installer version for a long term usage. The No Install version is good for evaluation and testing the release candidate.

Question: What is the difference ElaborView Server and ElaborView?

Answer: They are two different products. ElaborView Server is a place to store ElaborView projects. ElaborView is a tool to comment on designs inside an ElaborView project. They work in a way that project owners send their design to ElaborView Server, reviewers then run ElaborView, import projects from server and start commenting.

Question: I cannot complete the installation due to a file is missing when copying files. What can I do?

Answer: This can be caused by a corrupted installer file. Please download the installer file again with a different mirror site and run it again to solve the problem.

Question: I cannot start the application after installing the software. What can I do?

Answer: There are several possible causes of the problem. If you are sure that your installation was performed correctly, contact Visual Paradigm's support team (support-team@visual-paradigm.com) for assistance. It is recommended to include the vp.log file, which can be found at the bin folder of ElaborView installation directory, for our team to diagnose in further.

Question: I don't have administrator right, can I install the software?

Answer: Yes, you can.

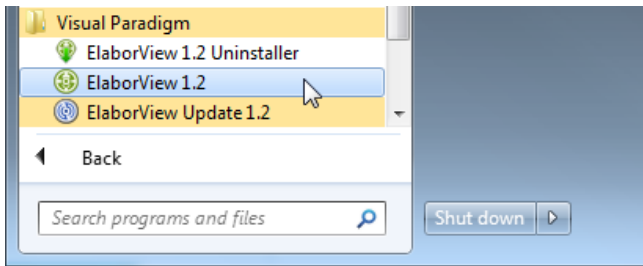
Question: The installer file is detected to contain a virus. What can I do?

Answer: Our installer files are all packed by ourselves in a secure environment, and are scanned for virus before releasing to public. If a virus is detected, please update to the latest virus profile first. After that, we recommend you perform a full system scan, download the installer file from our official site, and run the installation again. If the problem remains, please contact us (support-team@visual-paradigm.com) or the virus scanner vendor for assistance.

Starting ElaborView

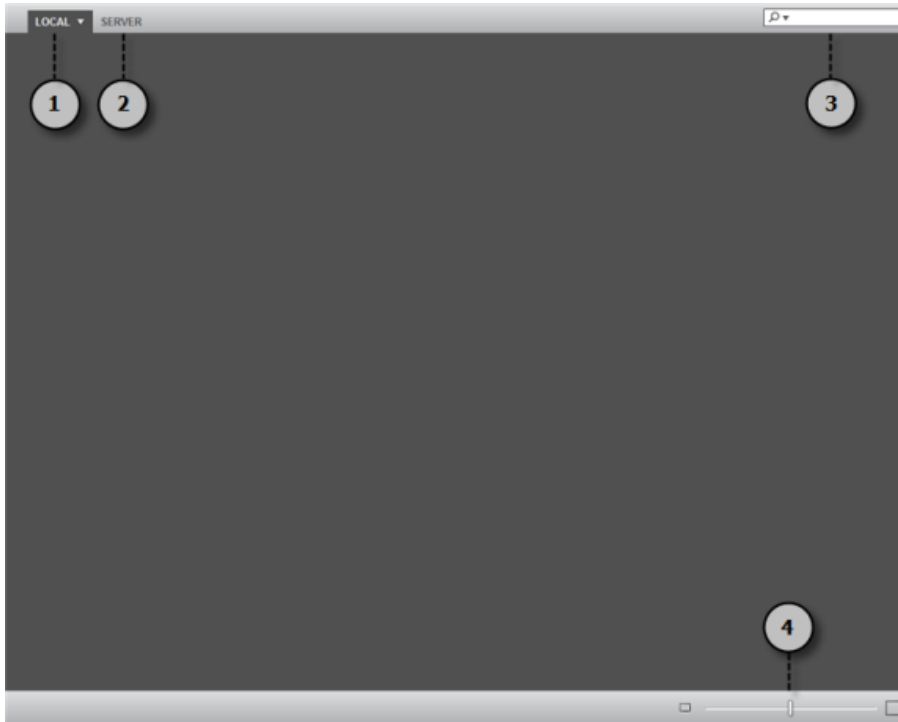
Elaborview is the application where reviewer download ElaborView project, perform commenting and submit comment.

To start ElaborView, run ElaborView from the Start Menu. If you have not add shortcuts to Start Menu during the installation, or you are using the No-Install version, you can run ElaborView under the bin folder of ElaborView installation directory.



Start ElaborView

Overview of ElaborView



ElaborView

No.	Name	Description
1	Local	Click on it to import the ElaborView project file, exported by Visual Paradigm visual modeling tools' ElaborView Manager.
2	Server	Click on it to import ElaborView project from ElaborView server.
3	SearchFilter	Filter the ElaborView project or diagram name.
4	Slider	Zoom in and out of a diagram.

Description of ElaborView

ElaborView manager

ElaborView manager is a component which enables project owner to create ElaborView project ready for reviewing as well as to import submissions made by reviewers.

Introduction to ElaborView manager

Learn what ElaborView manager is.

Requesting and activating account

Learn how to create account for project owner.

Creating Reviewer

Learn how to create account for reviewer.

Sending diagrams to ElaborView server

Learn how to send diagrams from client to ElaborView server for reviewers to review.

Exporting project

Learn how to export diagrams as ElaborView project.

Marking a project completed

See how to install Floating License Server.

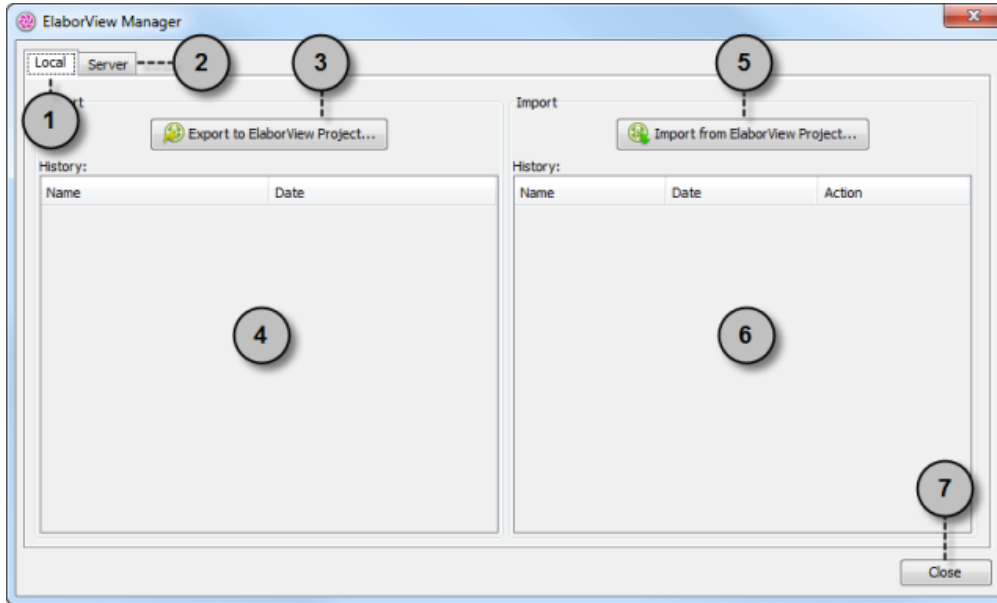
Introduction

ElaborView manager is a component which enables project owner to create ElaborView project ready for reviewing as well as to import submissions made by reviewers. Project owner is required to create a personal account, create reviewers and create ElaborView project through the ElaborView manager. The created ElaborView project can then be imported by ElaborView for revieweign.

To open ElaborView manager, select **File > ElaborView Manager** from the main menu.

Overview of ElaborView manager

Local

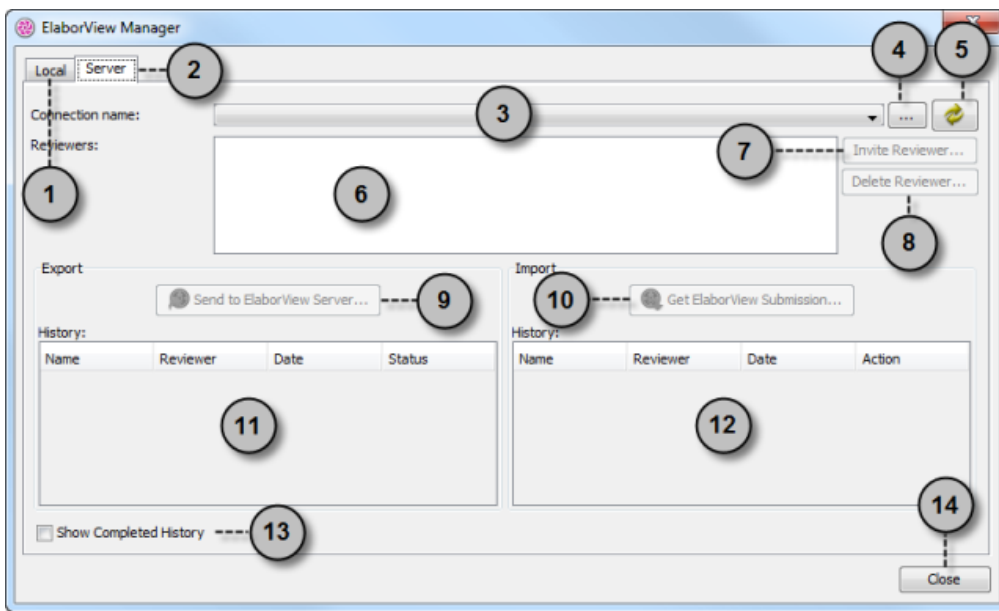


Overview of ElaborView Manager (Local tab)

No.	Name	Description
1	Local	A tab that lets you exports the currently opened .vpp project as an ElaborView project file (.elp). The file can then be imported into ElaborView for reviewing.
2	Server	A tab that lets you exports the currently opened .vpp project to ElaborView server. Reviewers can import the project from server through ElaborView.
3	Export to ElaborView Project	Click on this button to save the currently opened .vpp project as an ElaborView project file (.elp).
4	Export history	Lists the record of exported ElaborView project.
5	Import from ElaborView Project	Click on this button to import an ElaborView project which was exported by ElaborView and contains the reviews made by reviewer.
6	Import history	List the record of imported ElaborView project.
7	Close	Close the manager.

Description of ElaborView Manager (Local tab)

Server



Overview of ElaborView Manager (Server tab)

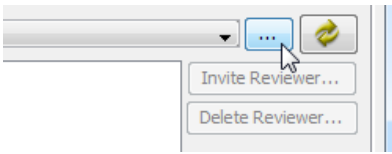
No.	Name	Description
1	Local	A tab that lets you exports the currently opened .vpp project as an ElaborView project file (.elp). The file can then be imported into ElaborView for reviewing.
2	Server	A tab that lets you exports the currently opened .vpp project to ElaborView server. Reviewers can import the project from server through ElaborView.
3	Connection name	Select a previously defined connection to connect to ElaborView server.
4	Configure connection	To add or edit a connection with ElaborView server.
5	Refresh	Refresh the project and connection status.
6	Reviewers	A list of reviewers who are eligible to reviewing project created by project owner.
7	Invite Reviewer	Click this to create a reviewer who can review project.
8	Delete Reviewer	Click this to delete reviewer.
9	Send to ElaborView Server	Click on this button to send the diagrams in current project to ElaborView server as an ElaborView project.
10	Get ElaborView Submission	Click on this button to import an ElaborView project which was exported by ElaborView and contains the reviews made by reviewer.
11	Export history	Lists the record of exported ElaborView project.
12	Import history	List the record of imported ElaborView project.
13	Show Completed History	Initially completed projects are hidden. By checking this, completed projects are listed.
14	Close	Close the manager.

Description of ElaborView Manager (Server tab)

Requesting and activating account

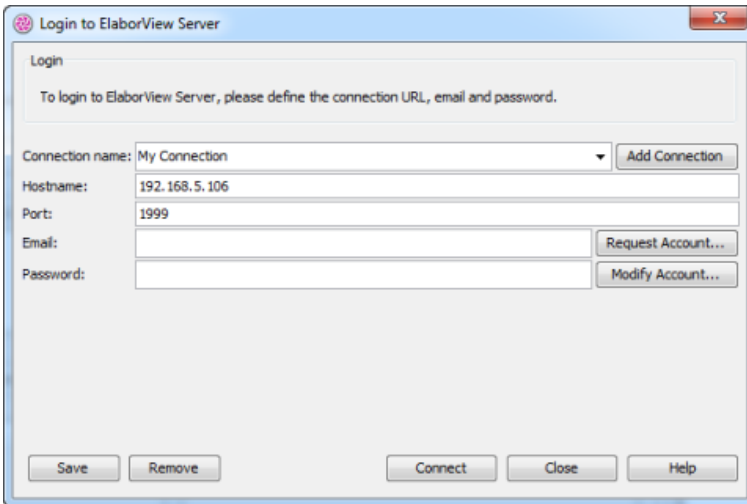
When a [Visual Paradigm project](#) (.vpp) owner needs someone to comment on his design, he needs to create a personal account first. An account enables project owner to create ElaborView project ready for reviewing, create reviewer for commenting his work, and to import the feedback submitted by reviewers. To request an account:

1. Select **File > ElaborView Manager...** from the main menu.
2. In the **Server** tab, click on the three dots next to the drop down menu of **Connection name**.



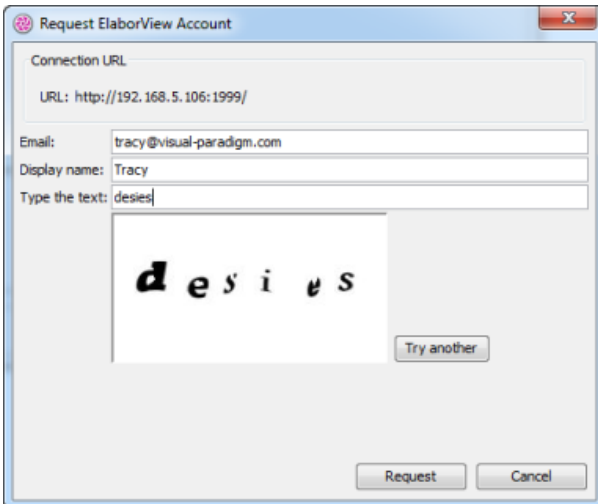
To configure connection

3. You are required to login to the server to create account. In the **Login to ElaborView Server** dialog box, enter the **connection name**, **host name** and **port**. Please note that hostname and port are freely configurable in Professional or Enterprise Edition. For Modeler and Standard Edition, the hostname is restricted to be www.elaborview.com, provided by Visual Paradigm.



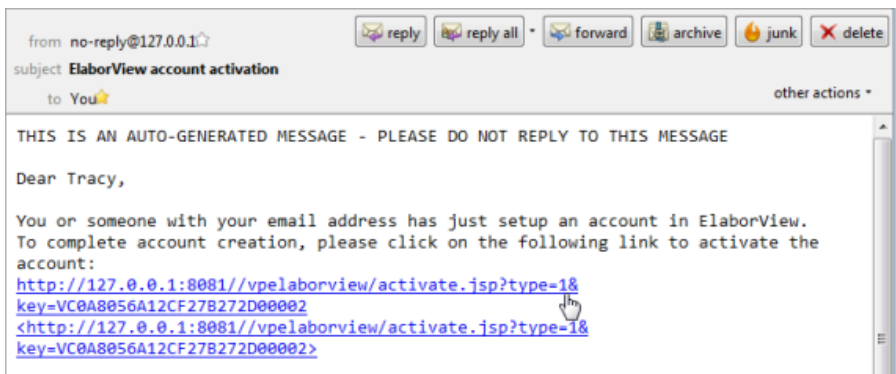
Specify connection information

4. Click on **Request Account...**. Note that the connection with ElaborView Server must be active in order to request account.
5. In the **Request ElaborView Account** dialog box, enter your (i.e. the project owner) **Email** address, the **display name** and captcha text. If you cannot read the captcha text, click on **Try another** to render another one. Click **Request**.



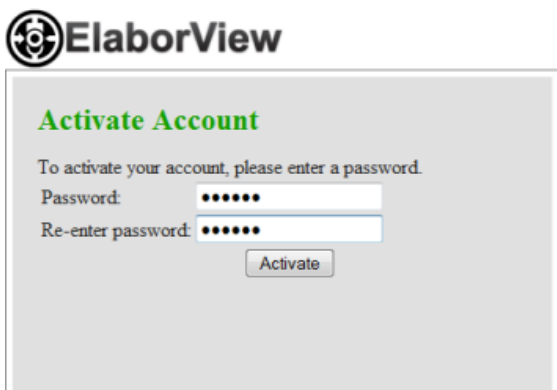
Enter the Email address of account

6. You need to activate the account in order to use it to create reviewer and ElaborView project. Check your Email box. You should receive an activation Email very soon. If you do not find one, make sure it was not dropped to the junk box. Click on the hyperlink appear in the Email to activate the account.



Activation Email

7. In the popup web page, give your account a password and click **Activate**. Now, you start creating reviewers and ElaborView projects.



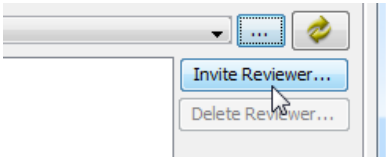
Activate account

Inviting Reviewer

A reviewer is someone who has the right, granted by the project owner, for commenting on (i.e. reviewing) a project. Analogically, the relationship between project owner and reviewer is somewhat like a student and a teacher. Project owner creates an ElaborView project (i.e. a homework), and ask reviewer to comment on (i.e. review and correct) it. As mentioned before, reviewer is granted (by project owner), not taken. The person who are invited to be reviewer can choose to accept or reject to become a reviewer. If accept, he/she can import ElaborView project from server and start the reviewing.

To invite an reviewer:

1. Select **File > ElaborView Manager...** from the main menu.
2. In the **Server** tab, select a connection from the **Connection name** drop down menu.
3. Click on **Invite Reviewer**.



To invite reviewer

4. In the **Invite Reviewer** dialog box, enter the reviewer's **Email** address, his/her **display name** and captcha text. If you cannot read the captcha text, click on **Try another** to render another one. Click **OK** to send the reviewer an invitation Email.



Enter reviewer information

5. The reviewer need to accept the invitation. Check your Email box for the invitation. If the reviewer does not find one, make sure it was not dropped to the junk box. Click on the **Accept** link appear in the Email to activate the reviewer.



Activation Email

6. In the popup web page, give a password and click **Activate**.



Activate Reviewer

To activate your account, please enter a password.

Password:

Re-enter password:

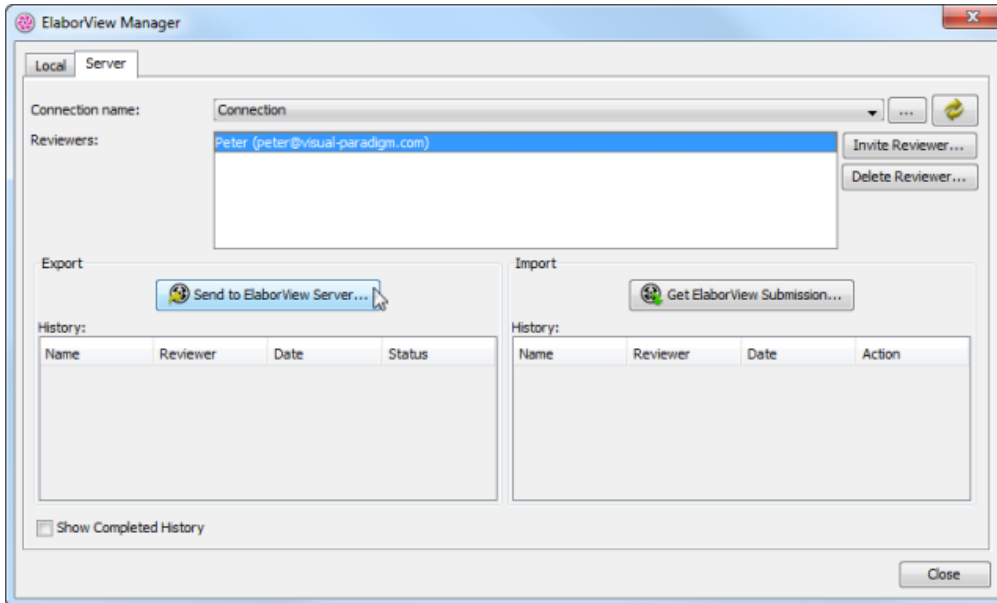
Activate reviewer

Sending diagrams to ElaborView server

When project owner wants reviewers to review his diagram(s), he/she need to export the diagram(s) to an ElaborView project. Project owner can create as many ElaborView projects as needed, throughout the development cycle. Reviewers import ElaborView project from server and start reviewing and commenting.

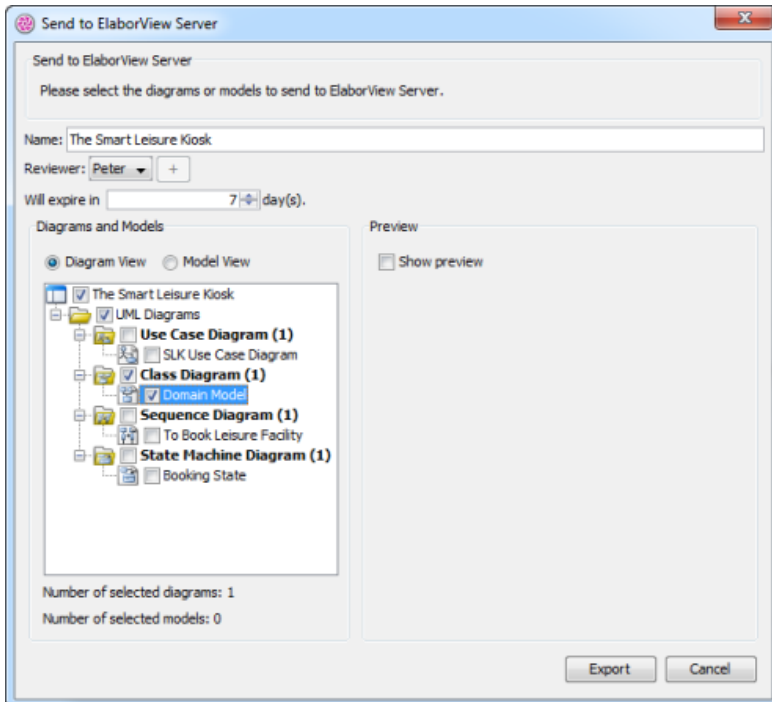
Project owner can either send diagrams to server or export as a .elp file (i.e. local). To send diagrams to server:

1. Select **File > ElaborView Manager...** from the main menu.
2. In the **Server** tab, click on **Send to ElaborView Server....**



To send diagram to ElaborView Server

3. Fill in the name of ElaborView project. Try to give a unique name to avoid mixing up with any other projects. Select the reviewers who are allowed to review this project. You may click + to add multiple reviewers. Optionally change the expiry date. Email will be sent to reviewer(s) one day before expiry. Finally, select the diagram(s) to include in ElaborView project. The selected diagram can be commented by reviewers. The rest will be ignored when exporting. Click **Export**.



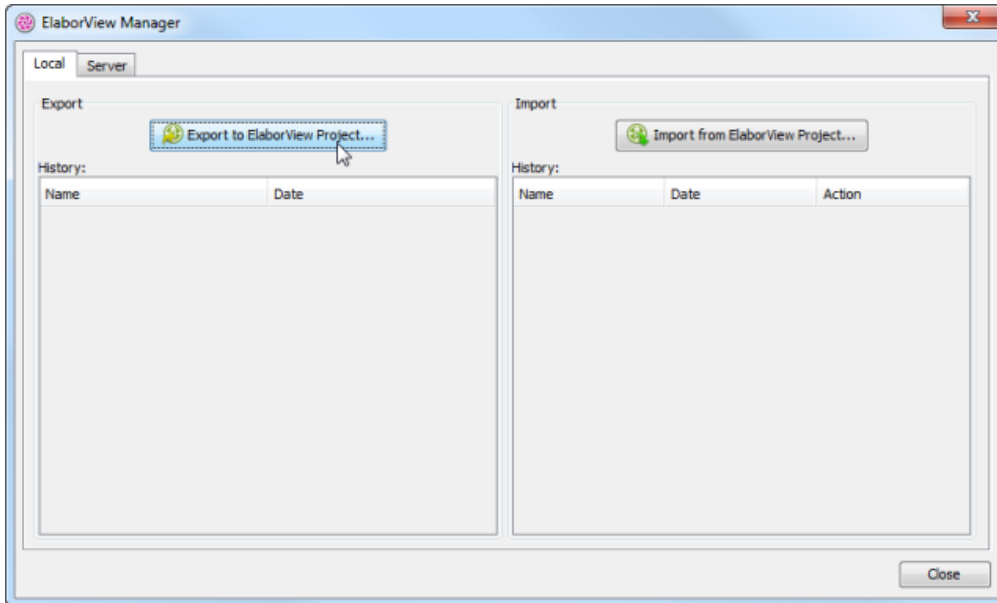
Send diagram to ElaborView Server

Exporting project

When project owner wants reviewer to review his diagram(s), he/she need to export the diagram(s) to an ElaborView project (.elp). Project owner can create as many ElaborView projects as needed, throughout the development cycle. Reviewers import the .elp file to ElaborView and start reviewing and commenting.

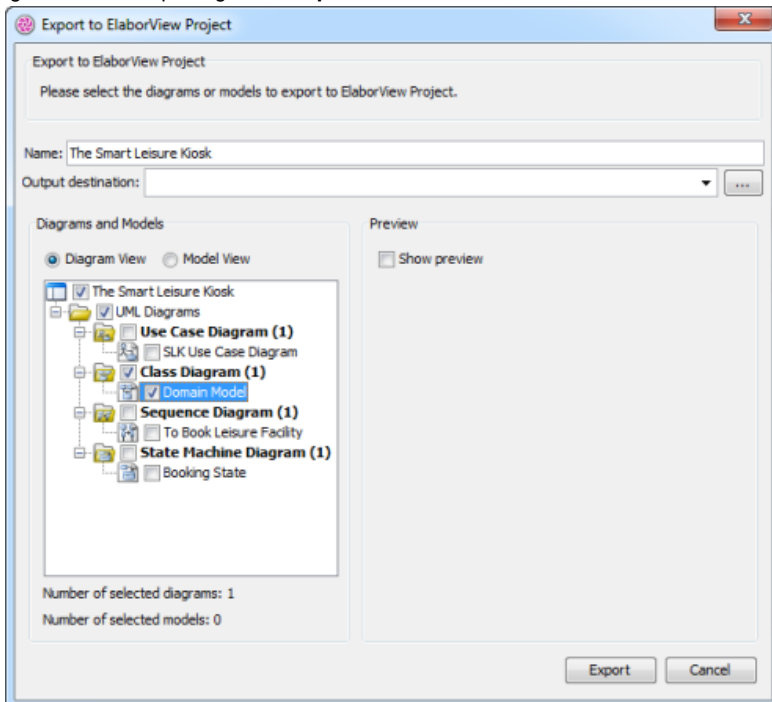
Project owner can either send diagrams to server or export as a .elp file (i.e. local). To export diagrams as a .elp file:

1. Select **File > ElaborView Manager...** from the main menu.
2. In the **Local** tab, click on **Export to ElaborView Project...**



To export ElaborView project

3. Fill in the name of ElaborView project. Try to give a unique name to avoid mixing up with any other projects. Specify the output path of the .elp file to export. Finally, select the diagram(s) to include in ElaborView project. The selected diagram will be read by reviewers. The rest will be ignored when exporting. Click **Export**.



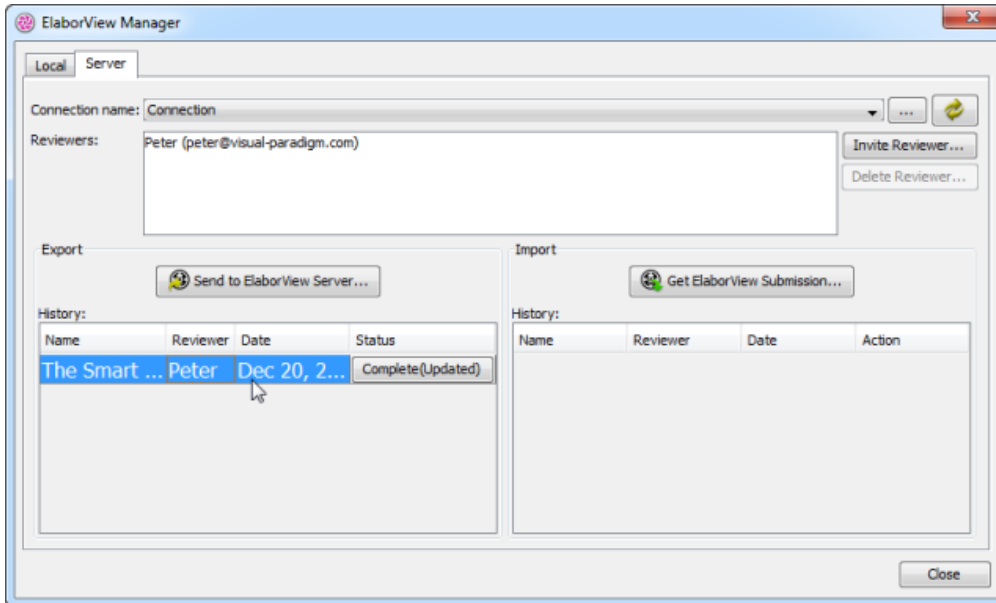
The Export dialog box

Marking a project completed

A project exported to ElaborView server has its own annotation cycle. It begins at the time project owner create it, and end at the time project owner set it Completed. When an ElaborView project is completed, annotators will not be able to make new submission. Although project owner can mark a project Completed anytime it has been created, it is suggested to mark it Completed when it was marked Finished by annotator.

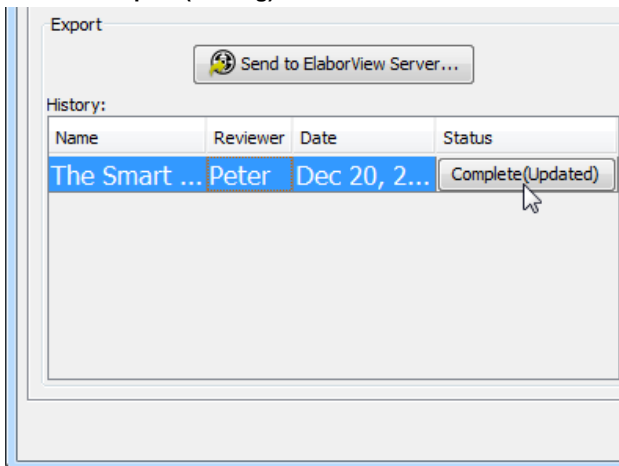
To mark an ElaborView project Completed:

1. Select **File > ElaborView Manager...** from the main menu.
2. In the **Server** tab, select the project you want to set it completed, under the **Export** section.



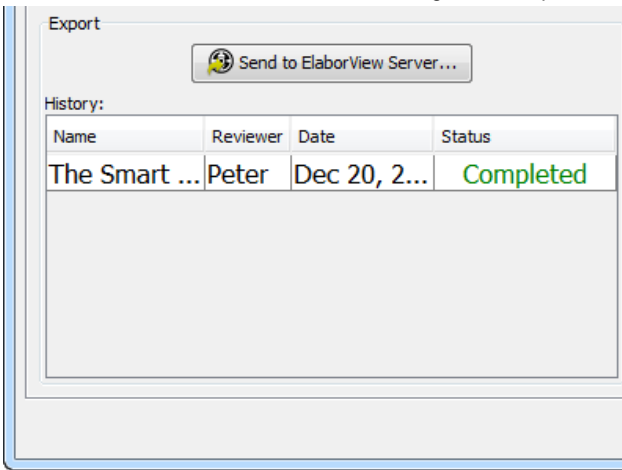
Select a project

3. Click on **Complete(Waiting)**.



Set a project Complete

4. Click **Yes** for confirmation. The status is changed to Completed.



Status changed

Activation and account management

Reviewer has to activate his reviewer account in order to review designs.

Activation

Learn the activation of reviewer.

Configuring Reviewer

Learn how to configure a reviewer.

Activation

A reviewer is someone who has the right, granted by the project owner, for reviewing and commenting on a project. Analogically, the relationship between project owner and reviewer is somewhat like a student and a teacher. Project owner creates an ElaborView project (i.e. a homework), and ask reviewer to comment on (i.e. review and correct) it. As mentioned before, reviewer is granted (by project owner), not taken. The person who is invited to be reviewer can choose to accept or reject to become a reviewer. If accept, he/she can import ElaborView project from server and start the reviewing.

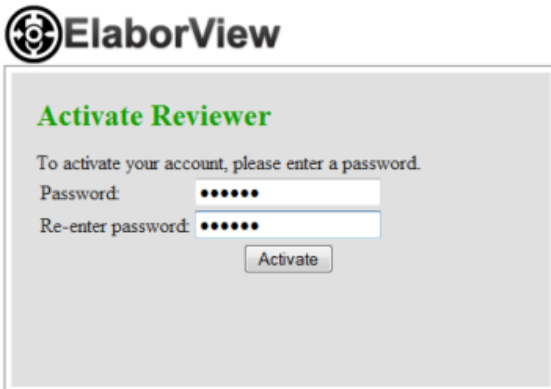
Once project owner has sent an invitation, (potential) reviewer should:

1. Check the Email box for the invitation. If the reviewer does not find one, make sure it was not dropped to the junk box. Click on the **Accept** link appear in the Email to activate the reviewer.



Activation Email

2. In the popup web page, give a password and click **Activate**.

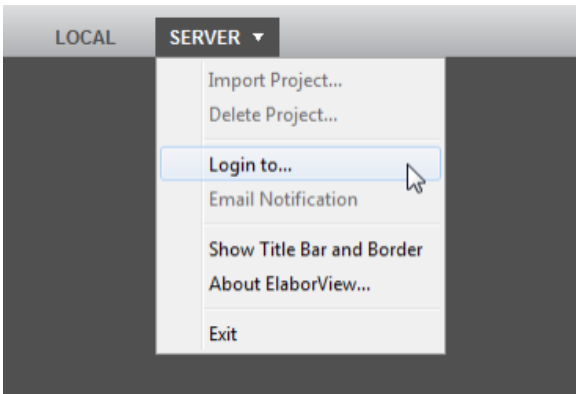


Activate Reviewer

Configuring Reviewer

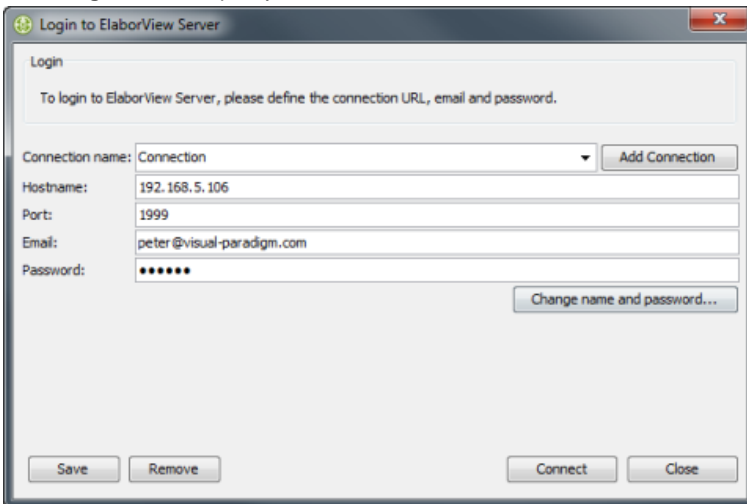
As a reviewer, you can change your password, display name and choose whether to enable/disable Email notification. To configure reviewer:

1. In ElaborView, select **Server > Login to...** from the main menu.



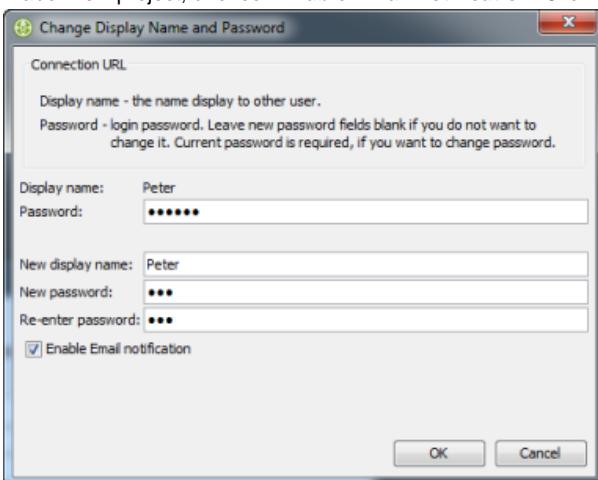
To login to server

2. In the **Login** window, specify the connection information to connect to ElaborView server.



Specify the connection information

3. Click on **Change name and password...** When you are prompted if you want to save the connection, choose **Yes**. Choose **Yes** again when you are asked to login.
4. In the **Change Display Name and Password** dialog box, enter your current password.
5. Enter the new display name. If you do not want to change it, just write down the current name. Enter the new password. Again, if you want to keep it as-is, enter the current password (do not leave it empty). If you want to receive Email notification when you are assigned to an ElaborView project, uncheck **Enable Email notification**. Click **OK**.



Specify the updated account information

6. In the **Login** window, click **Connect** at the bottom of window.

Importing ElaborView projects or updates

Get an ElaborView project or updates from server.

Importing projects/updates from server

Learn how to get projects/updates from ElaborView server.

Importing projects from local (.elp file)

Learn how to open a .elp file for reviewing.

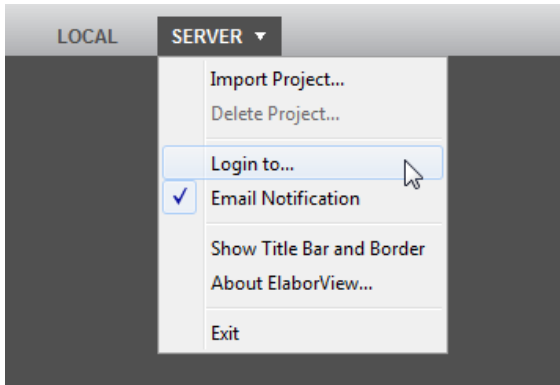
Importing projects/updates from server

Once you, the reviewer, has been assigned with ElaborView project(s), you need to import them from server and start reviewing.

Login and import project

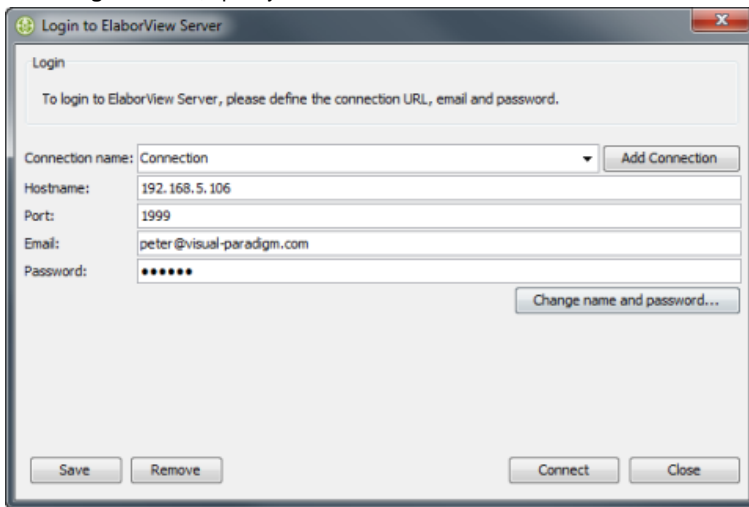
When you start ElaborView, you need to login to ElaborView server in order to import project.

1. In ElaborView, select **Server > Login to...** from the main menu.



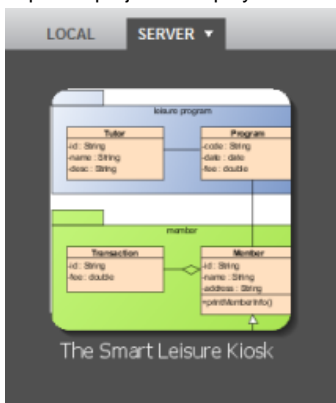
To login to server

2. In the **Login** window, specify the connection information to connect to ElaborView server.



Specify the connection information

3. Click on **Connect**.
4. If you were assigned one or more ElaborView project by project owner, you should immediately see the **Update Available** dialog box. Click **Yes**. Imported project is displayed in the ElaborView window.

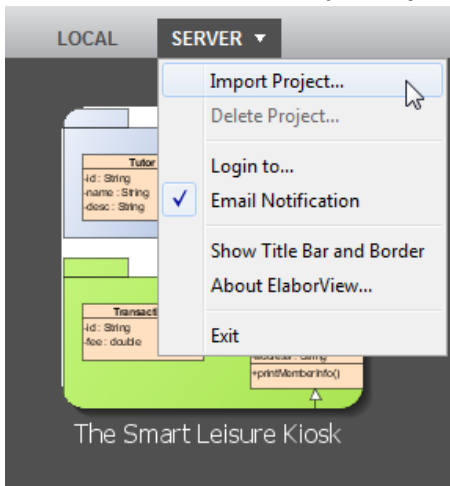


Project is imported from server

Import project

Once you have logged into ElaborView server, you can import project anytime through the main menu of ElaborView project.

1. In ElaborView, select **Server > Import Project...** from the main menu.



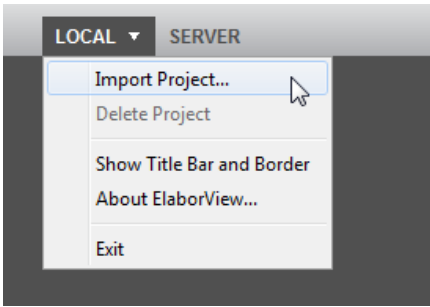
Import project from server

Importing projects from local (.elp file)

Once the project owner has exported the ElaborView project zip, you, as annotator, can import it into ElaborView and start reviewing.

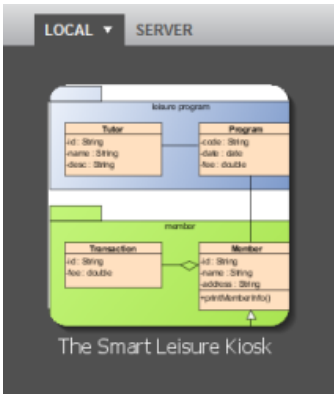
To import ElaborView project zip:

1. In ElaborView, select **Local > Import Project...** from the main menu.



To import project

Imported project is displayed in the ElaborView window.



Project is imported from server

Commenting

Everything about the commenting process.

Perform commenting

See how to comment on diagram.

Various commenting tools

Learn how to use the commenting tools one by one.

Submitting comment

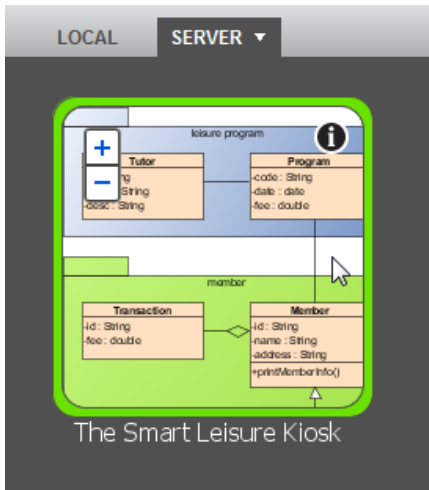
Learn how to submit comment to ElaborView server.

Perform commenting

Once project owner has sent his/her design to ElaborView Server or has exported the design to a .elp file, you, the reviewer can import it into ElaborView and start reviewing and commenting.

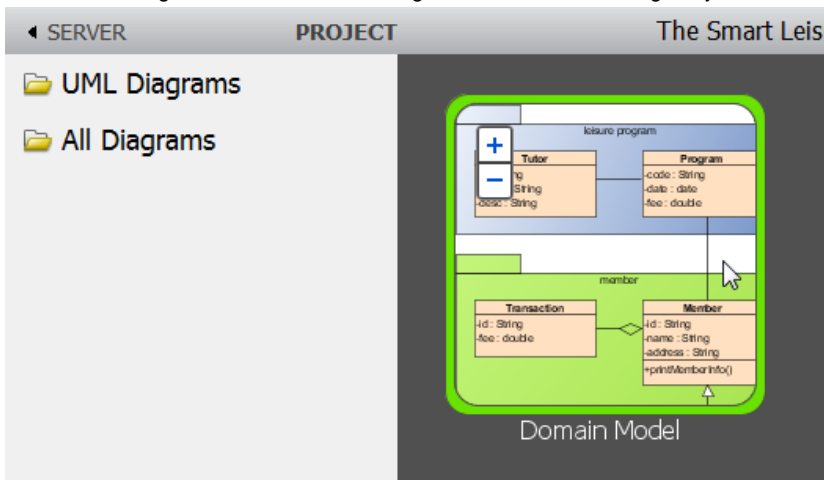
To start reviewing and commenting:

1. Having imported the projects (either from server or from .elp file), double click on the project you want to review and comment.



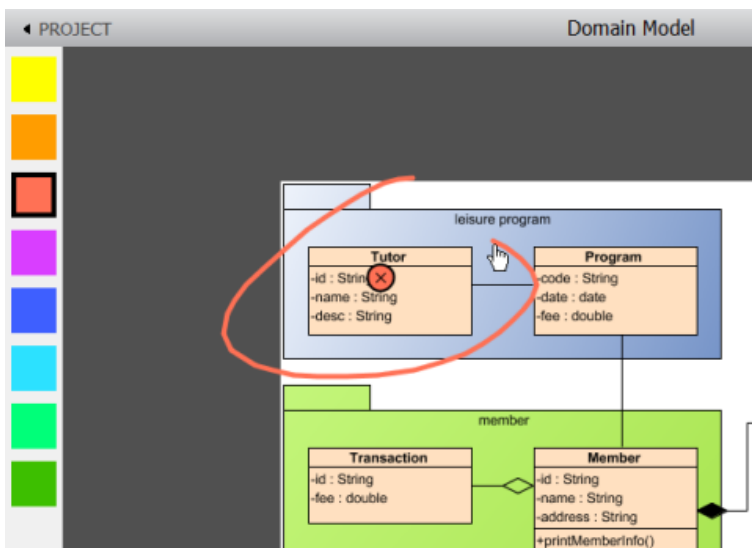
Open a project

2. This lists the diagram available for reviewing. Double click on the diagram you want to review.



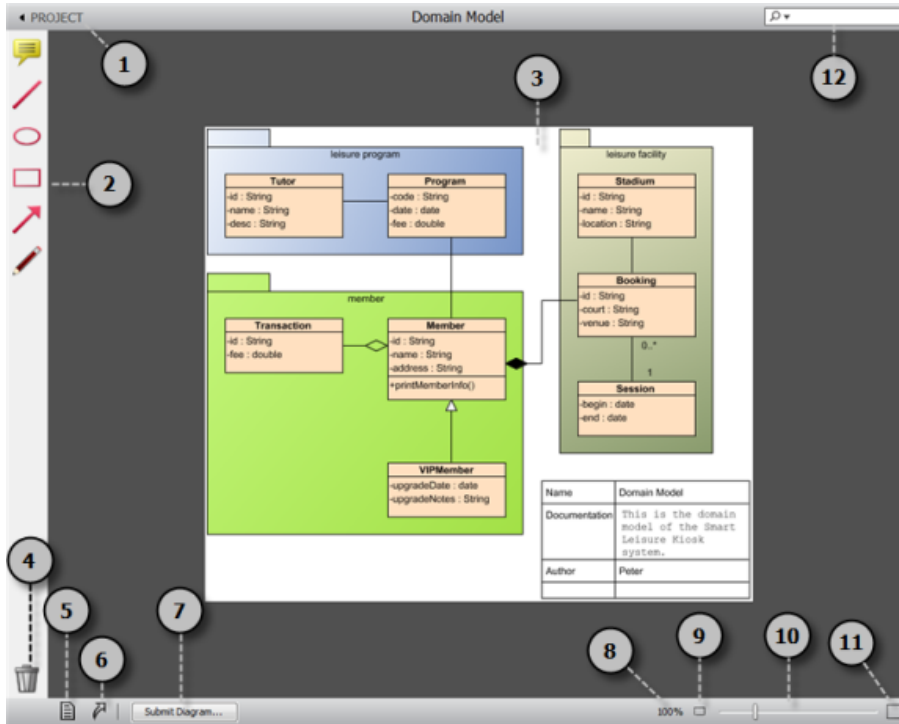
Open a diagram

3. Start commenting by using the commenting tools available from the toolbar on the left hand side. The next page provides you with more information about the use of tools.



Commenting

Overview of ElaborView (diagram opened)



Overview of ElaborView (Diagram opened)

No.	Name	Description
1	Open project	Click to go back to the project page where all the diagrams of the project are listed.
2	Commenting tools	Array of tools you can use to comment on the diagram.
3	Diagram	The diagram to comment.
4	Delete comment	Click to delete a comment shape selected.
5	Documentation	Click to show the documentation of selected shape.
6	References	Click to show the file/folder/shape/model/URL references added to selected shape.
7	Submit Diagram	Submit the comments to ElaborView Server. If you are opening a diagram imported from a .elp file, the button should be an Export button which let you export the diagram into a .elp file. You can then give the .elp file to project owner for studying your comment.
8	100%	Click to set the zoom ratio to 100%.
9	Zoom out	Zoom out of diagram.
10	Zoom slider	Drag on the slider to control the zoom ratio.
11	Zoom in	Magnify the diagram content.
12	Filter	Only useful when opening project or diagram selection page. No function here.

Description of ElaborView (Diagram opened)

Various commenting tools

In ElaborView, several commenting tools are available for you to express different kinds of comments accurately and easily. In this page, you will see how to make use of them to comment on a design.

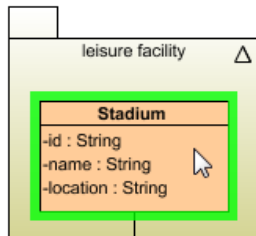
Note

Note is a speech bubble shape that contains your comment. You can add a note to point to the area that needs to comment. You can reposition the pointer of note shape to point to a shape or the background of diagram.

Creating note to shape

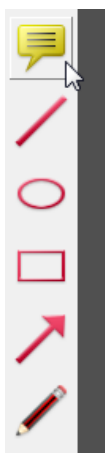
If you want to comment on a specific shape, follow the steps below to add note to shape. Note that the pointer of note will remain inside the shape, and you cannot drag it out.

1. Select a shape on diagram.



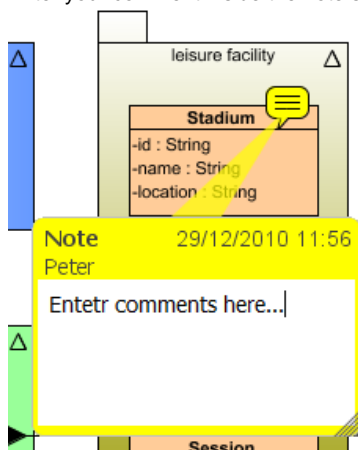
Select a shape

2. Select **Note** from the toolbar at the left hand side.



Select note

3. Enter your comment inside the note shape.



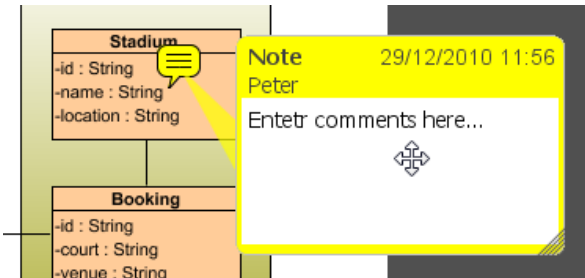
Enter comments

- The direction of note pointer can be repositioned by dragging the note icon.



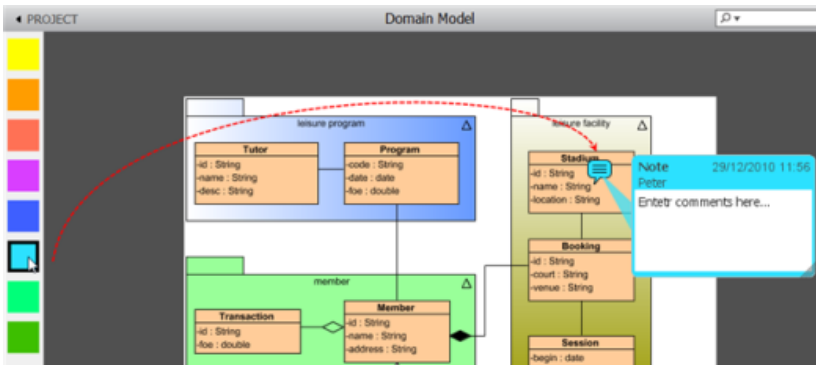
Reposition the note pointer

- Drag to reposition the note if the note covers other shapes and you want it to be moved to empty space.



Reposition the note

- Select a color for note.

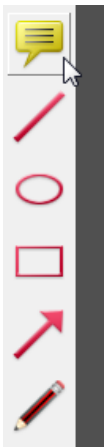


Select a color for note

Creating note to diagram background

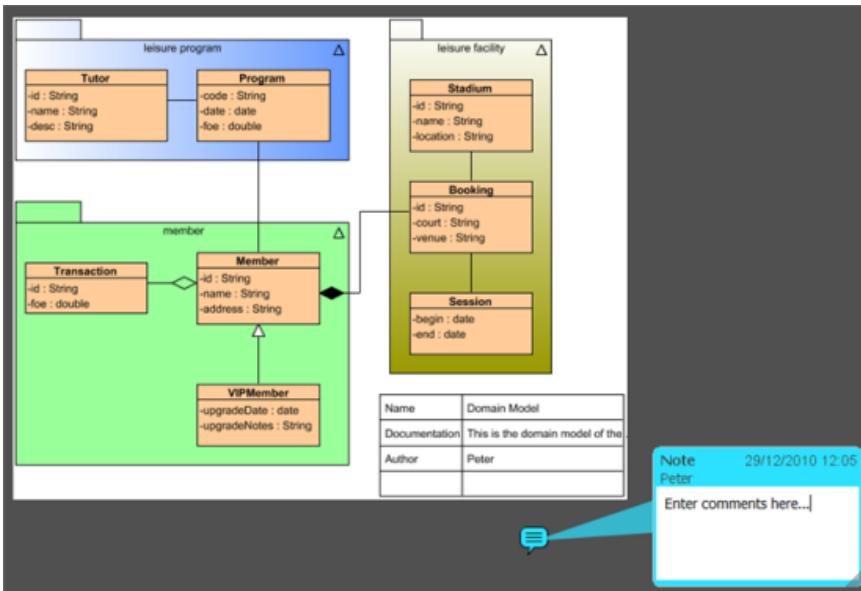
Sometimes, you may want to add a comment that is general for the diagram. For example, request analyst to layout the shapes on diagram. In such cases, you probably want to add a note that points to the diagram background instead of pointing to specific shape.

- Do not select any shape. If you are selecting a shape, click on the diagram background to deselect it.
- Select **Note** from the toolbar at the left hand side.



Select note

- Click on the diagram background. Here if you click inside a shape, the pointer of note will be created inside shape, and you cannot drag it out of the shape.
- Enter your comment.

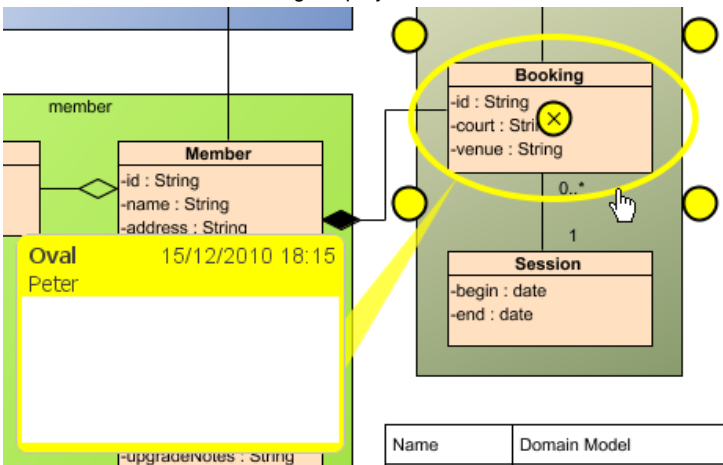


Enter comments

Creating note to commenting shape

Other than note shape, there are other commenting tools such as line, oval, rectangle, arrow and freehand. You can add note shapes to them, to make your comment more descriptive.

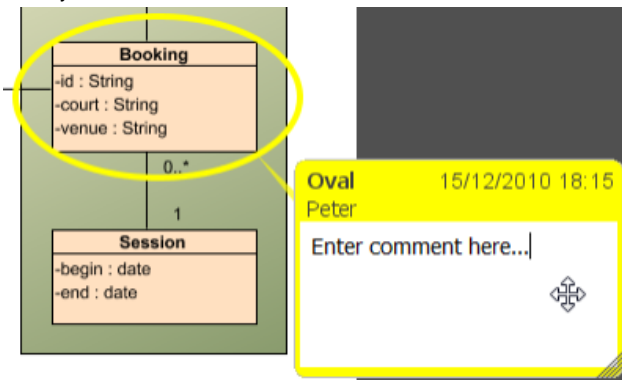
- Double click on the commenting shape you want to describe.



Double click on an oval

Reposition the note if necessary.

- Enter your comment.

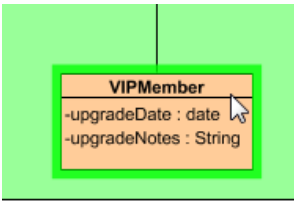


Enter comment

Line

You can add a line on a shape to indicate that it is unnecessary and can be removed.

1. Select a shape on diagram.



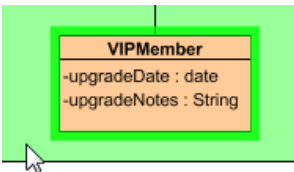
Select a shape

2. Select **Line** from the toolbar at the left hand side.



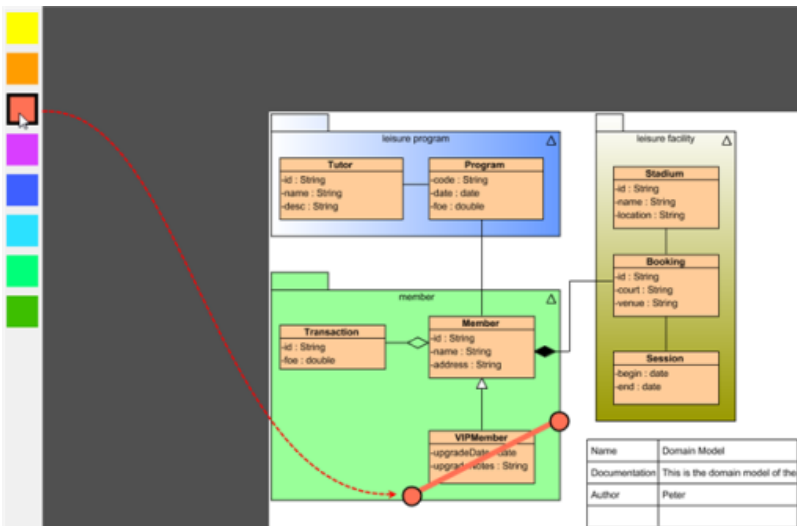
Select line

3. Fix the beginning point of the line.



Fix the beginning point

4. Drag and form the end of the line.
5. Select a color for the line.



Select a color for the line

Oval

You can add an oval on a shape to emphasize its importance and draw others' attention.

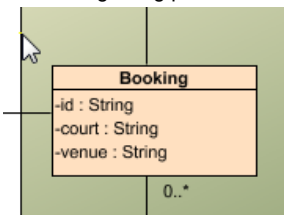
1. Select a shape on diagram.

2. Select **Oval** from the toolbar at the left hand side.



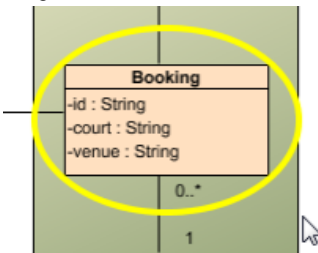
Select oval

3. Fix the beginning point of the oval.



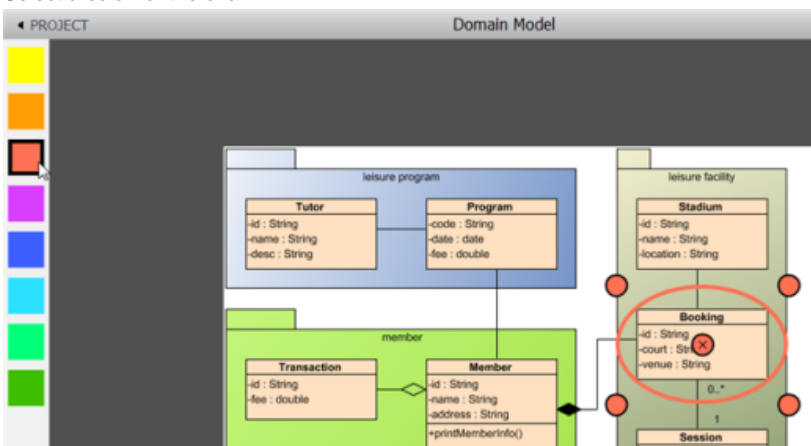
Fix the beginning point

4. Drag the mouse and release it when the oval is formed.



The oval is formed

5. Select a color for the oval.



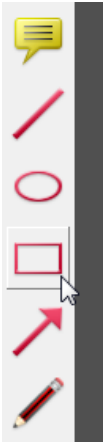
Select a color for the oval

Rectangle

You can add a rectangle on a shape to emphasize its importance and draw others' attention.

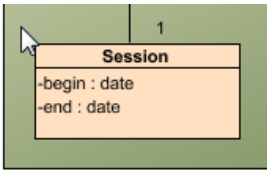
1. Select shape on diagram.

2. Select **Rectangle** from the toolbar at the left hand side.



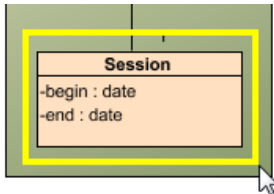
Select rectangle

3. Fix the beginning point of the rectangle.



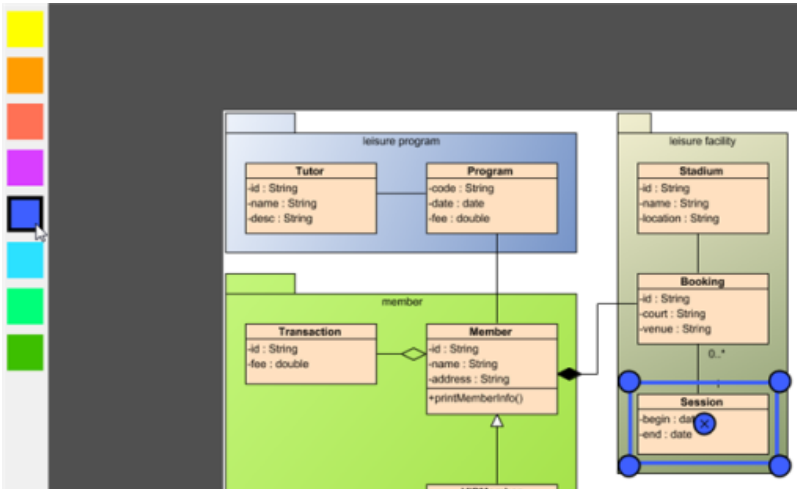
Fix the beginning point

4. Drag and form the end of the rectangle.



The rectangle is formed

5. Select a color for the rectangle.



Select a color

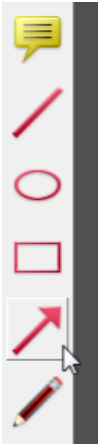
NOTE: If you want to remove the comment, double click on the comment shape.

Arrow

You can add an arrow between two shapes to link them together.

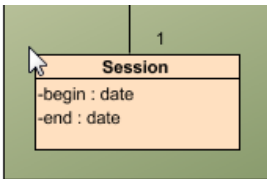
1. Select shape on diagram.

2. Select **Arrow** from the toolbar at the left hand side.



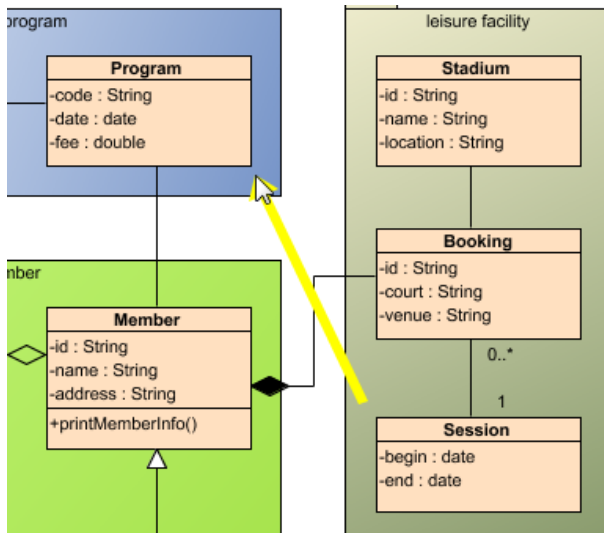
Select arrow

3. Start dragging from the source shape.



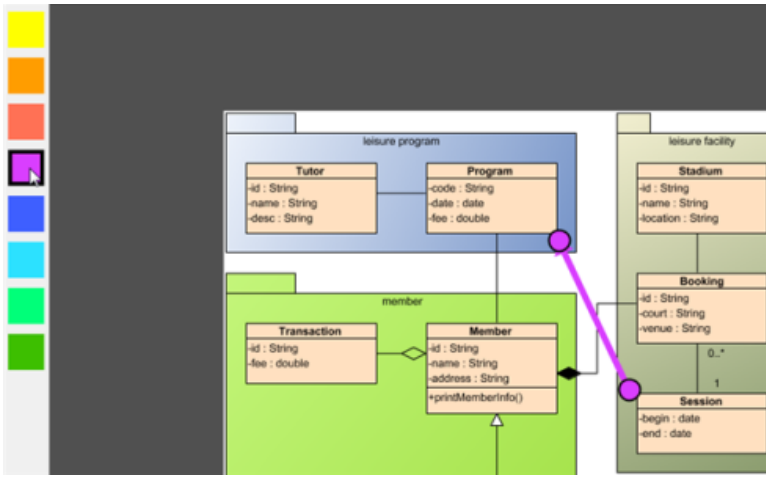
Drag from the source shape

4. Release the mouse until it reaches the destination shape.



Arrow is formed

- Select a color for the arrow.

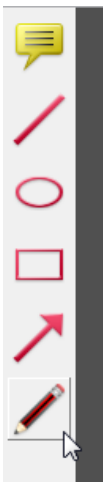


Select a color

Freehand

With the freehand, you can draw various kinds of shapes.

- Select **Freehand** from the toolbar at the left hand side.



Select freehand

- Drag from the vicinity of target shape to form the outline.

Name	Domain Model
Documentation	This is the domain model of the Smart Leisure Kiosk system.
Author	Peter

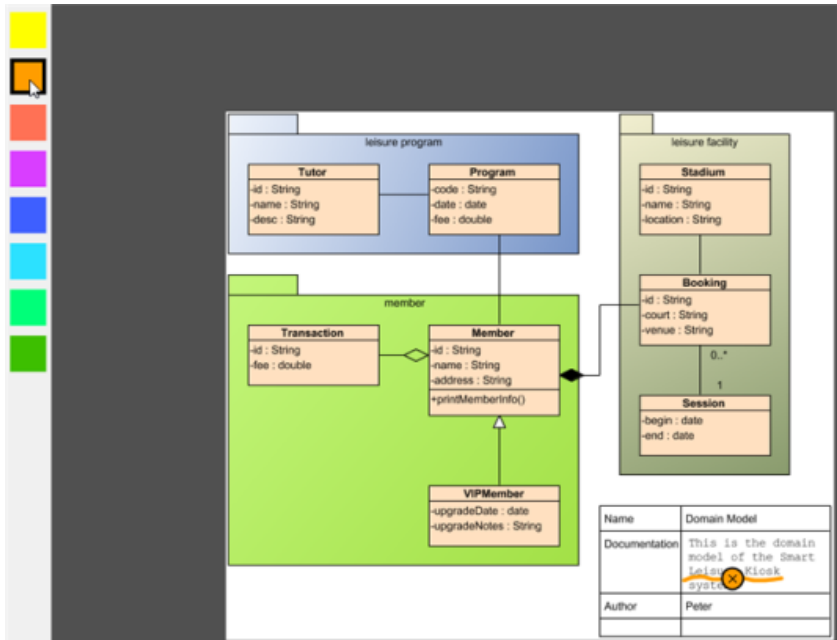
Drag from the vicinity of shape

- Release the mouse until the free style shape is created.

Name	Domain Model
Documentation	This is the domain model of the Smart Leisure Kiosk system.
Author	Peter

Free style shape is created

4. Select a color for freehand.

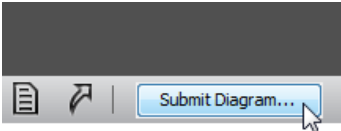


Select a color

Submitting comment

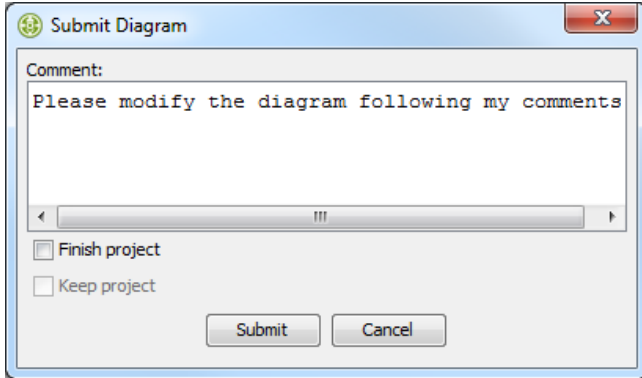
When finished commenting, reviewer can submit the comments to server, so that project owner can get it from server, study reviewer's feedback and make changes accordingly (if appropriate).

1. Upon finish making comments, click **Submit Diagram...** button at the bottom.



Submit the comments

2. In the pop-up **Submit Diagram** dialog box, you can enter your comments and check an option optionally. Click **Submit** button to confirm and submit your comments.



Submit Diagram dialog box

Option	Description
Finish project	Check this option when you decide not to add further comments to this project. By checking this option, you will not be able to submit any comments to the project.
Keep project	This option is only available when Finish project is checked. By checking this option, you can read your comment in ElaborView even after it is submitted and read your comment again.

*Description of options in **Submit Diagram** dialog box*

Reviewing comments

Review comments made by reviewers and take appropriate actions.

Getting submission from server

Learn how to retrieve submission from ElaborView server.

Importing comment from ElaborView project file (.elp)

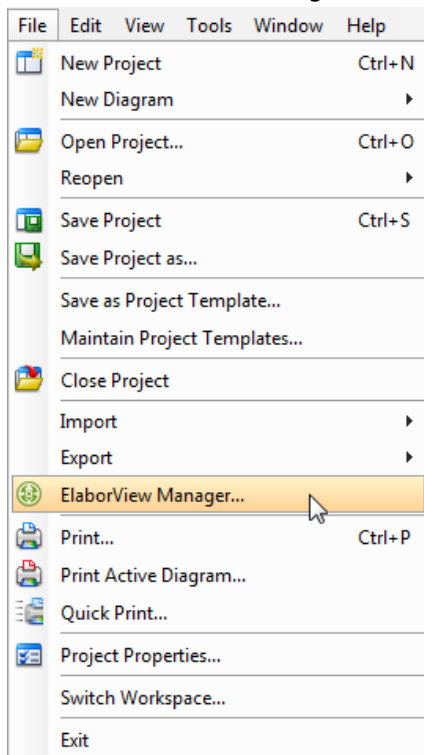
Learn how to import a .elp file.

Getting submission from server

A submission contains the feedback made by reviewer. Once a reviewer has finished commenting on your design and submitted his/her comment to ElaborView server, you can retrieve it to server, and open it, to see if any changes you should make on the design base on reviewer's feedback.

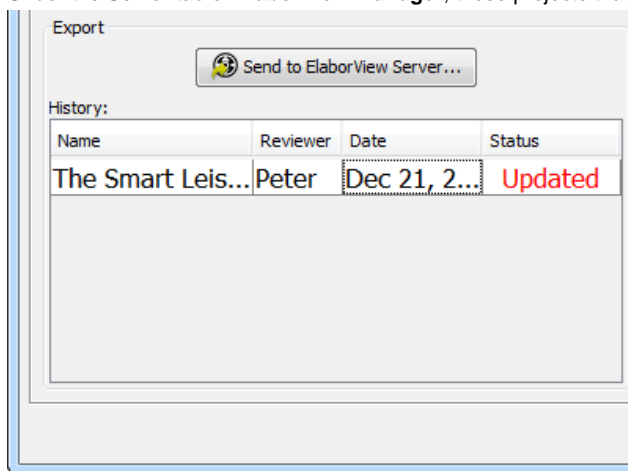
To retrieve submission from server:

1. Select **File > ElaborView Manager...** from the main menu.



Open ElaborView Manager

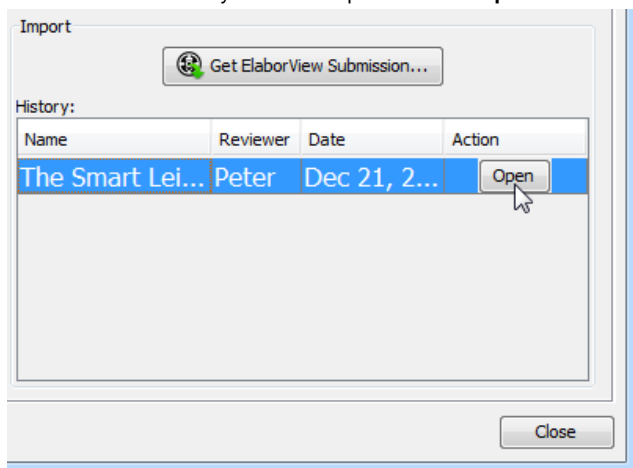
2. Under the Server tab of **ElaborView Manager**, those projects that have non-downloaded submissions are with status Updated.



ElaborView project updated

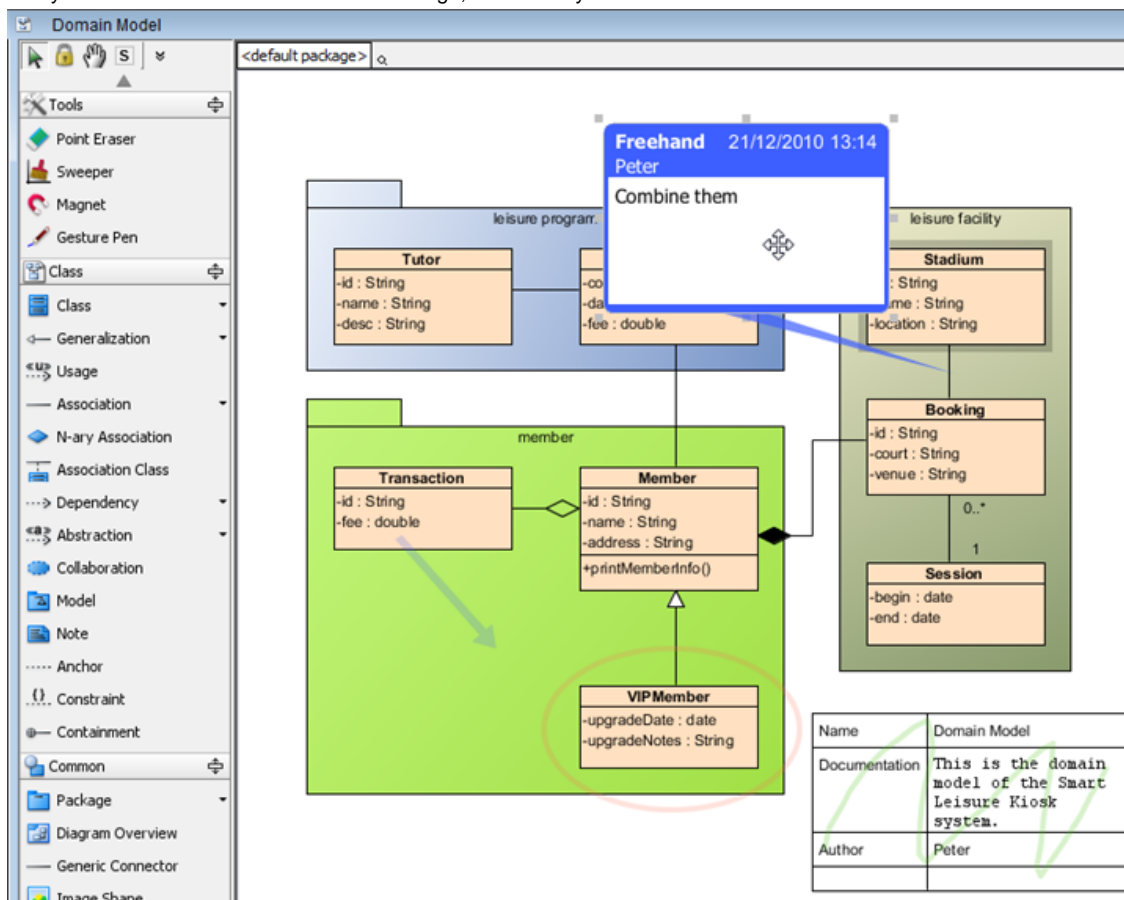
Click on **Get ElaborView Submission...** to retrieve the submissions.

3. Select the submission you want to open and click **Open**.



To open submission

4. Study reviewers' feedback and refine the design, if necessary.



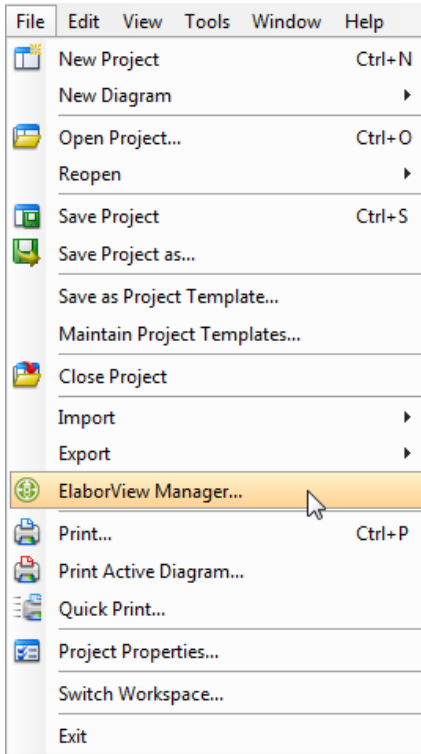
Review design base on reviewers' comments

Importing comment from ElaborView project file (.elp)

Once a reviewer has finished commenting on your design and exported his comment to a .elp ElaborView project file, you can import it into your Visual Paradigm project, open it, to see if any changes you should make on the design base on reviewer's feedback.

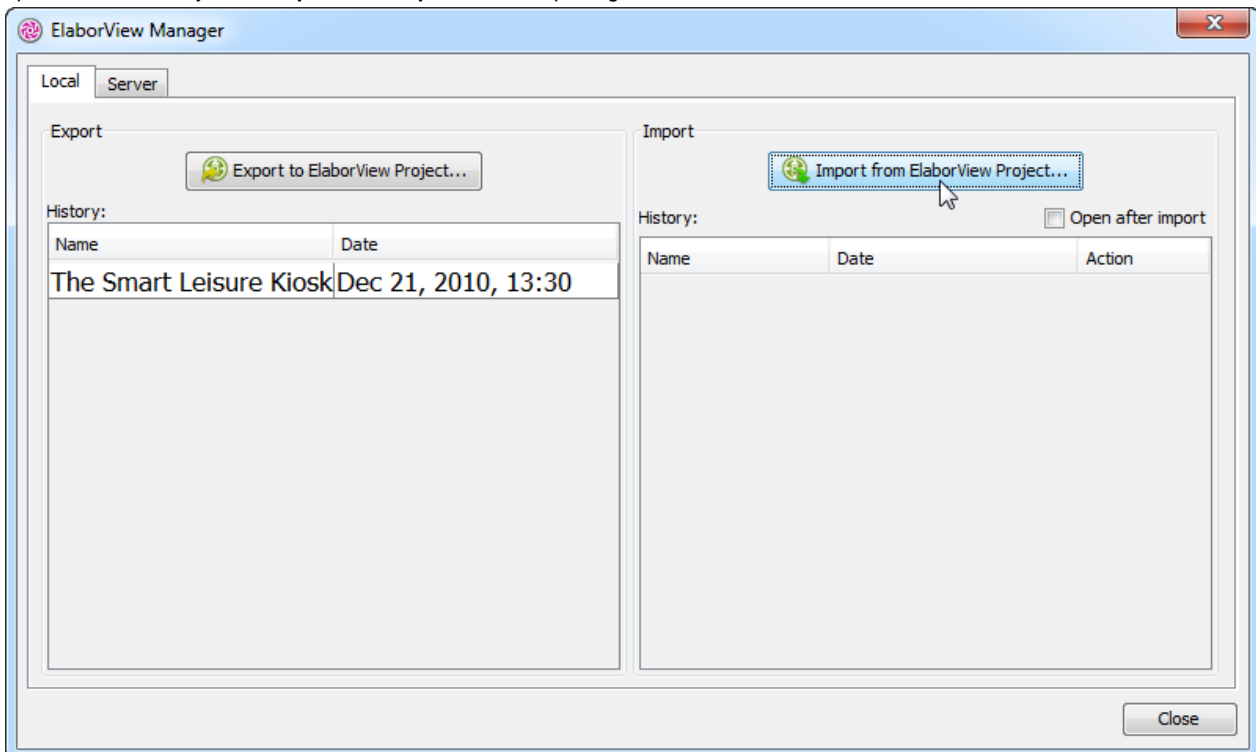
To import .elp file:

1. Select **File > ElaborView Manager...** from the main menu.



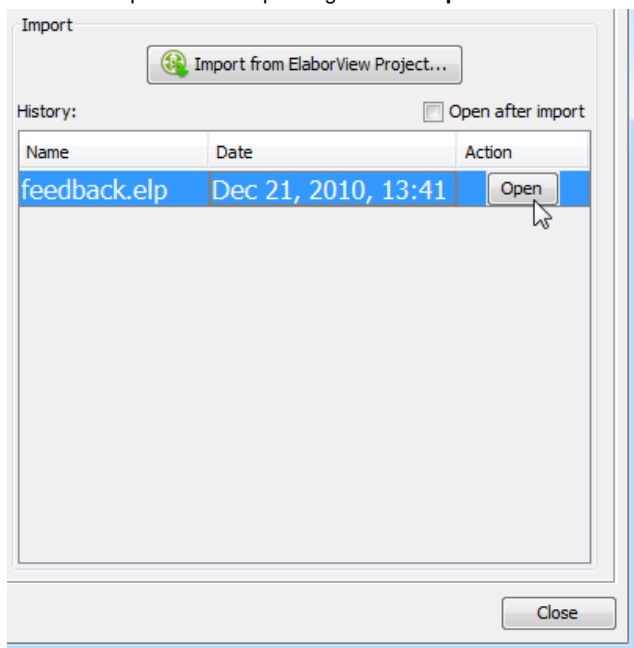
Open ElaborView Manager

2. In **ElaborView Manager**, click on **Import from ElaborView Project...** and select the .elp file to open. If you want the reviewer's feedback to be opened automatically, check **Open after import** before importing.



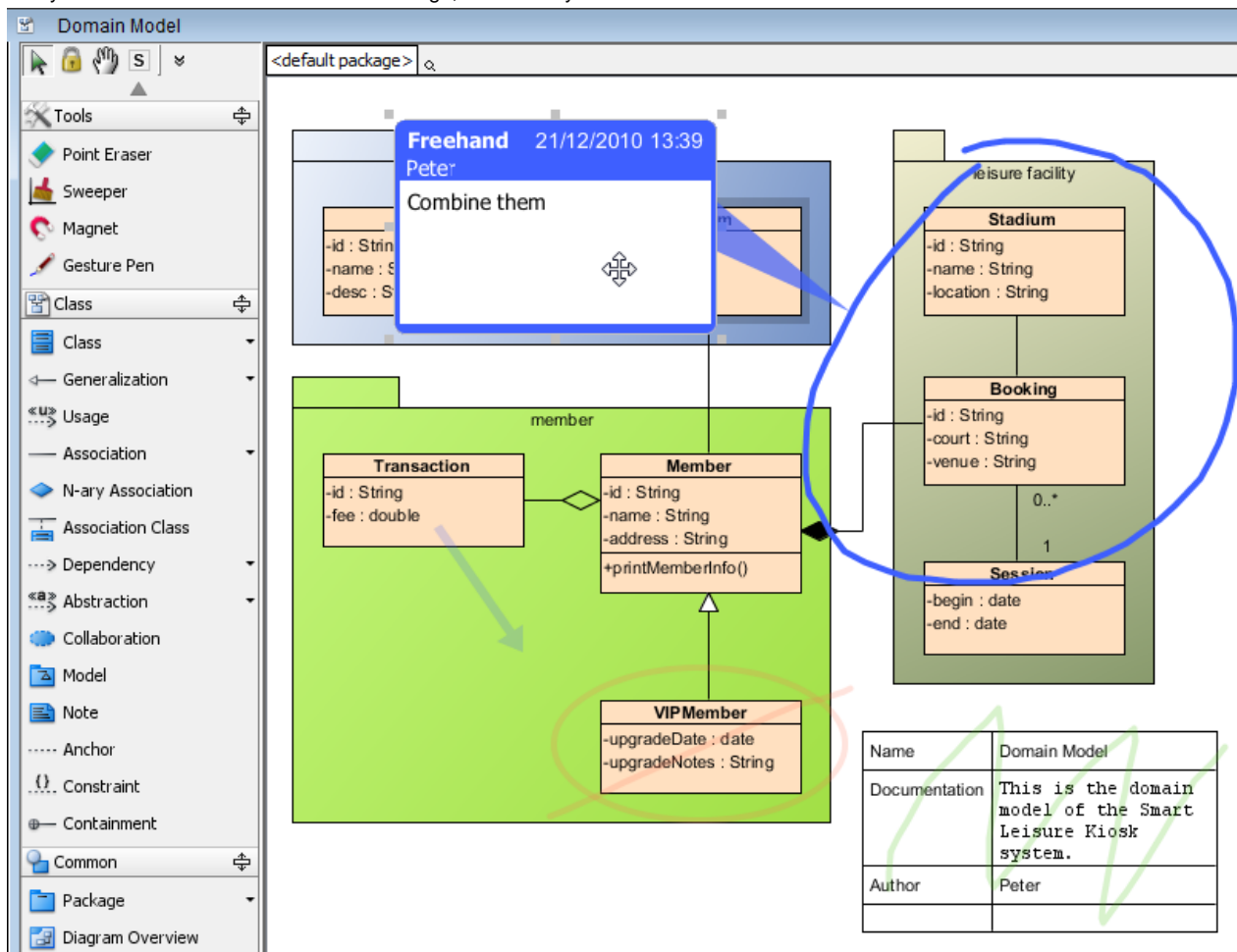
Import comments from ElaborView

3. Select the .elp file in the Import region. Click **Open**.



To open a .elp file

4. Study reviewers' feedback and refine the design, if necessary.



Review design base on reviewers' comments